

WINSTED TOWNSHIP

Each township has six files containing six sections in each, and one file containing all 36 sections.

Winsted01to06.pdf

Winsted07to12.pdf

Winsted13to18.pdf

Winsted19to24.pdf

Winsted25to30.pdf

Winsted31to36.pdf

WinstedAll36.pdf

The points are listed starting with the point above the SE corner and continuing in a counter-clockwise rotation around the section. This normally begins with the East point, Northeast, then North, but may also include Witness Corners, and/or Meander Corners.

Definitions

Witness Corner: A witness corner “stands in” when the true corner cannot be monumented or occupied because of difficult terrain or obstruction of the corner sight. The witness corner must be on the section line and is usually 5 or 10 chains away from the true corner.

Meander Corner: The intersection of a township, range, or section line and the banks of a navigable stream or meandering body of water.



OFFICE OF COUNTY RECORDER
McLEOD COUNTY MINNESOTA



DOCUMENT NUMBER A-339890

CERTIFIED FILED AND/OR RECORDED ON
January 29, 2004, AT 11:15:00 AM

LYNN ETTIE SCHRUPP, COUNTY RECORDER
Fees:

EQUIPMENT FUND	\$3.00
SURCHARGE	4.50
SURCHARGE ERER	.50
GENERAL ABSTRACT	12.00
Total	\$20.00

Received from/return to:
MINNESOTA DEPARTMENT OF TRANSPORTATION
2505 TRANSPORTATION ROAD
P O BOX 768
WILLMAR, MN 56201- 0768

A-339890

6138

CERTIFICATE OF LOCATION OF GOVERNMENT CORNER

EAST QUARTER Corner of Section 31, Township 117 N, Range 27 W

5th Principal Meridian, State of Minnesota, County of McLEOD

At the corner location shown on the sketch:

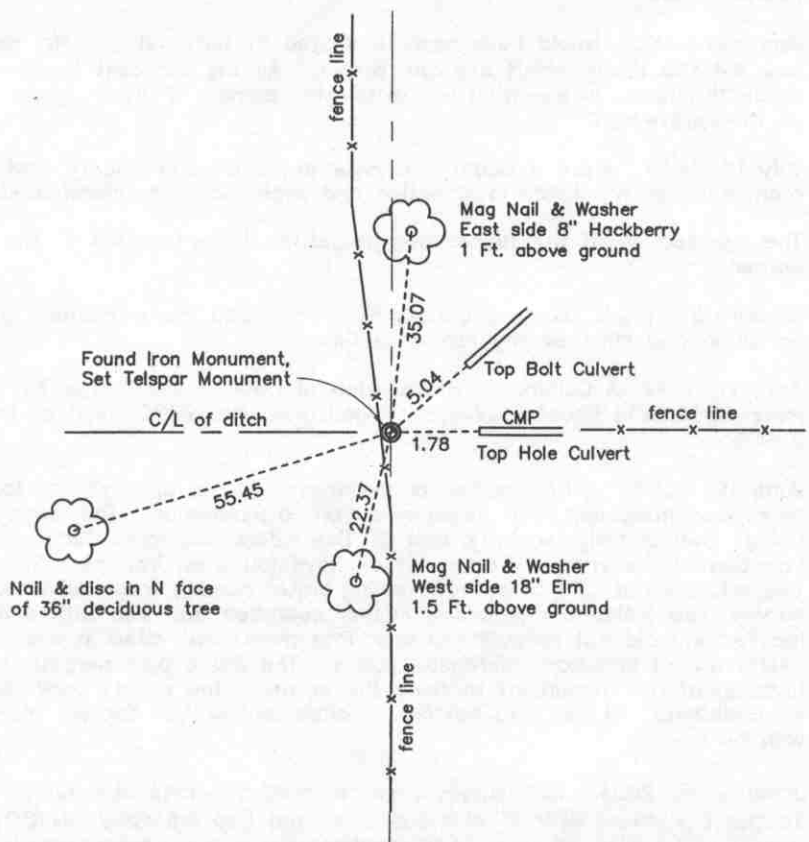
- On 06/19/03 found a IRON PIPE IN DITCH
DATE IN 1.5-FT OF RUNNING WATER
- left monument as found lowered monument removed monument (explain)
- On 01/28/04 placed a 2" SQUARE TELSPAR MONUMENT WITH 4" DIAMETER
DATE CAST IRON CAP INSCRIBED MN/DOT PLS CORNER

SKETCH OF REFERENCE TIES



SECTION 31, TOWNSHIP 117, RANGE 27

SECTION 32, TOWNSHIP 117, RANGE 27



Statement of evidence for this corner location is on back of this page.

I hereby certify that this document was researched and prepared by me or under my direct supervision.

Signature Keith Dahl Date January 29, 2004 License No. 18418
 Title: Land Surveyor Professional Engineer County Surveyor County Engineer

East Quarter Corner
Section 31, Township 117 North, Range 27 West, 5th Principal
Meridian

Statement of Evidence:

1856. E.N. Darling of the General Land Office originally established this corner. He set a post and marked a 20-inch elm and a 12-inch ash for bearing trees.

Any corner here would have been destroyed by farm tilling. Mr. Wegscheid, who did the tilling, didn't see any corner. All the adjacent landowners agree the fence intersection is the quarter corner. Fences north-south-east.

July 16, 1979. McLeod County Surveyor set a McLeod County cast iron monument at the fence intersection and took available reference ties.

The intersection of the fences has perpetuated the location of the quarter corner.

January 21, 1994. McLeod County Surveyor found the monument in good condition and checked the reference ties.

April 11, 1994. A Certificate of Location of Government Corner by Willard Pellinen, McLeod County Surveyor, Registration No. 9626; filed as Doc. No. 259055.

June 19, 2003. A URS survey crew determined the approximate location of corner monument with assistance from a landowner. The survey crew using the westerly, easterly, and SE ties referenced from Certificate of Location of Government Corner cited above found an iron pipe fitting the ties sticking out of 1.5 feet of running water coming from culverts. The survey crew pulled the pipe and further searched the area with a magnetic locator and did not recover the cast iron monument cited in the Certificate of Location referenced above. The found pipe perpetuates the location of the monument marking the corner. The survey crew also dug an additional 1.5 feet into bottom of ditch and probed for the monument with no result.

January 28, 2004. URS survey crew removed iron pipe and set 2" square Telspar Monument with 4" diameter Cast Iron Cap inscribed MN/DOT PLS Corner at location of pipe. Additional reference ties were set and distances are as shown on Sheet 1.



OFFICE OF COUNTY RECORDER
MCLEOD COUNTY MINNESOTA



DOCUMENT NUMBER A-339892

CERTIFIED FILED AND/OR RECORDED ON
January 29, 2004, AT 11:15:00 AM

LYNN ETTIE SCHRUPP, COUNTY RECORDER
Fees:

EQUIPMENT FUND	\$3.00
SURCHARGE	4.50
SURCHARGE ERER	.50
GENERAL ABSTRACT	12.00
Total	\$20.00

Received from/return to:
MINNESOTA DEPARTMENT OF TRANSPORTATION
2505 TRANSPORTATION ROAD
P O BOX 768
WILLMAR, MN 56201- 0768

A-339892

6038

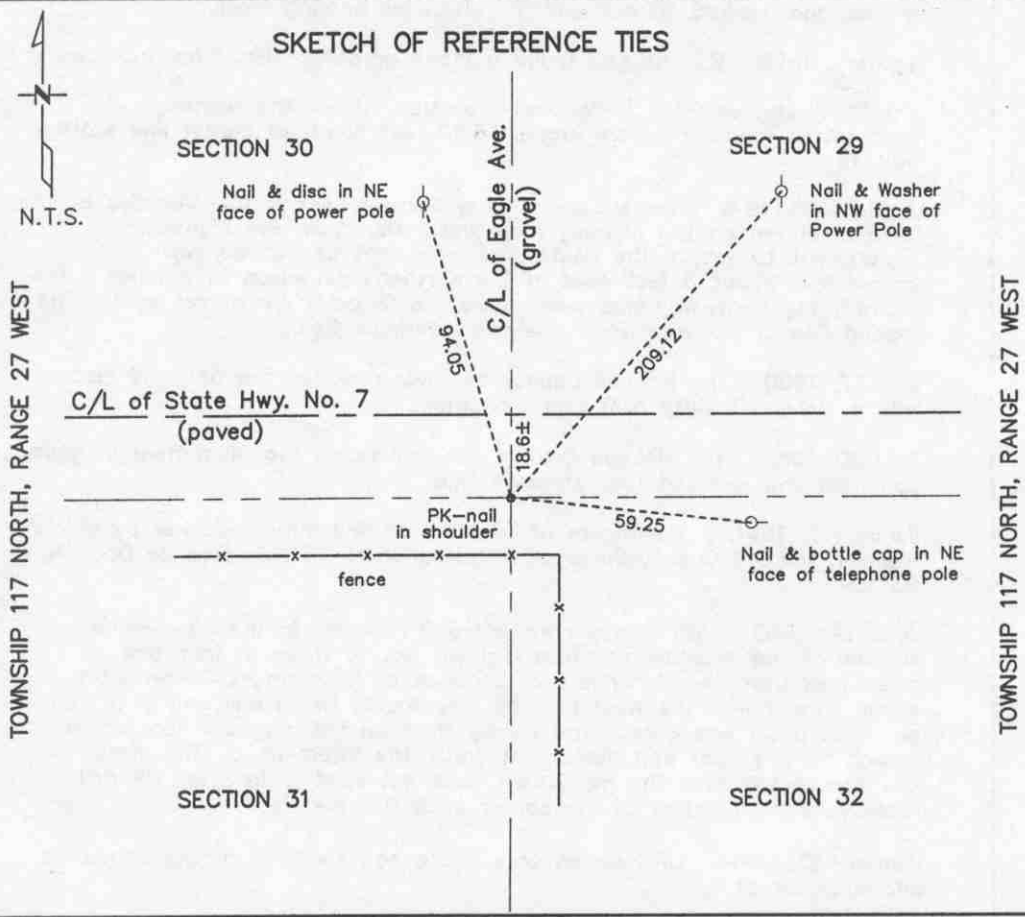
CERTIFICATE OF LOCATION OF GOVERNMENT CORNER

NORTHEAST Corner of Section 31, Township 117 N, Range 27 W
5th Principal Meridian, State of Minnesota, County of McLEOD

At the corner location shown on the sketch:

- On 06/19/2003 found a PK NAIL ON THE SOUTH SHOULDER OF STATE HWY. NO. 7 AT PAVEMENT SURFACE
DATE
- left monument as found lowered monument removed monument (explain)
- On _____ placed a _____
DATE

SKETCH OF REFERENCE TIES



Statement of evidence for this corner location is on back of this page.

I hereby certify that this document was researched and prepared by me or under my direct supervision.

Signature Keith Dahl Date January 29, 2004 License No. 18418
 Title: Land Surveyor Professional Engineer County Surveyor County Engineer

Northeast Corner
Section 31, Township 117 North, Range 27 West, 5th Principal
Meridian

Statement of Evidence:

This corner was originally set by the government in 1856. E.N. Darling set a post and marked an oak and 3 lindens for bearing trees.

January, 1898. E.L. Higgins found a stone agreeing with a bearing tree.

The State Highway No. 7 Right-of-Way Map, shows the Highway Department found a square stone, 18.60 feet south of center line station 684+00.

January 25, 1979. The McLeod County Surveyor set a nail and disc at the location shown on the highway map, using ties from the highway department to set up the center line alignment and stationing. The corner falls about 3 feet west of the northerly extension of a fence. The Highway Right-of-Way Map also shows the fence to be 3 feet east. The McLeod County Surveyor took available reference ties.

July 17, 1980. The McLeod County Surveyor replaced the nail and disc with a McLeod County cast iron monument.

July 20, 1989. The McLeod County Surveyor found the monument in good condition and checked the reference ties.

January 2, 1991. A Certificate of Location of Government Corner by Willard Pellinen, McLeod County Surveyor, Registration No. 9626; filed as Doc. No. 237104.

June 19, 2003. URS survey crew found 2 PK nails in the bituminous surface of the shoulder of State Highway No. 7. Three of four ties referenced from the Certificate of Location of Government Corner cited above agreed with the West PK Nail. The fourth tie, a nail and bottle cap on fence post, was gone. The survey crew used a magnetic locator to search for the cast iron monument under the bituminous. The signal from the locator indicates the monument does not exist. The West PK nail represents the location of the corner as it fits the ties.

January 21, 2004. URS survey crew set a new tie NE'ly of the corner as shown on Sheet 1.



OFFICE OF COUNTY RECORDER
McLEOD COUNTY MINNESOTA

DOCUMENT NUMBER A-339891

CERTIFIED FILED AND/OR RECORDED ON
January 29, 2004, AT 11:15:00 AM

LYNN ETTIE SCHRUPP, COUNTY RECORDER

Fees:	EQUIPMENT FUND	\$3.00
	SURCHARGE	4.50
	SURCHARGE ERER	.50
	GENERAL ABSTRACT	12.00
	Total	\$20.00

A-339891

Received from/return to:
MINNESOTA DEPARTMENT OF TRANSPORTATION
2505 TRANSPORTATION ROAD
P O BOX 768
WILLMAR, MN 56201- 0768

6037

CERTIFICATE OF LOCATION OF GOVERNMENT CORNER

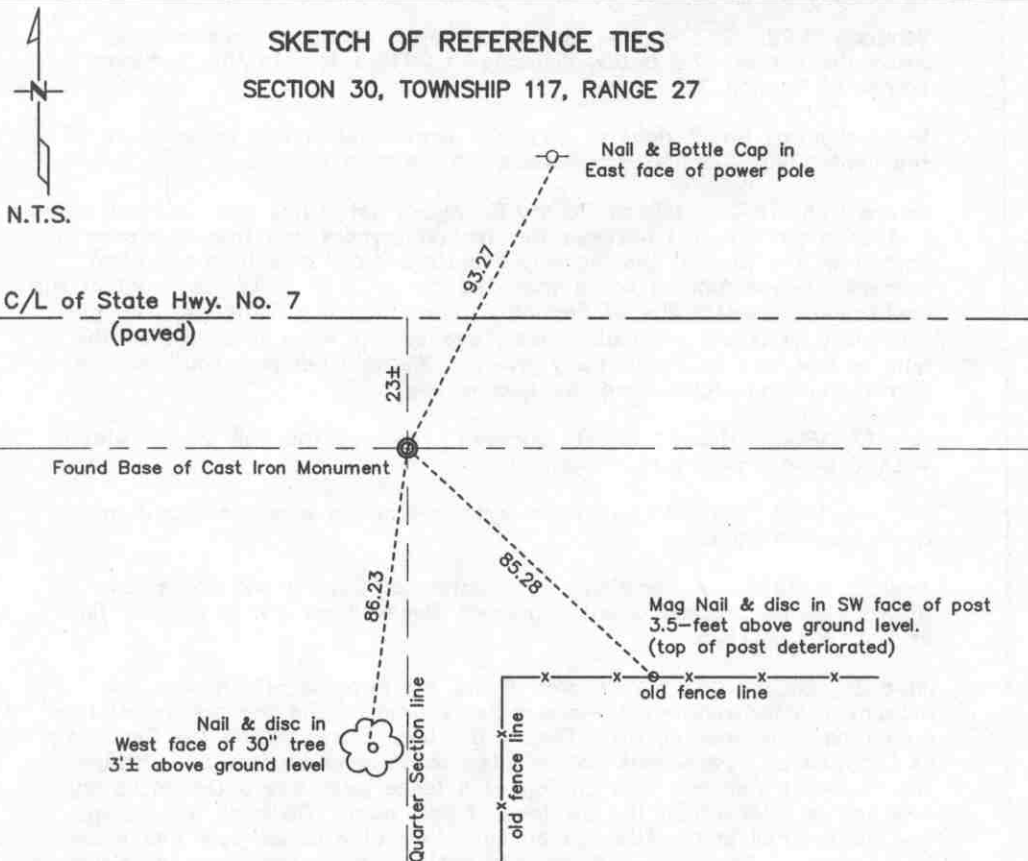
NORTH QUARTER Corner of Section 31, Township 117 N, Range 27 W
5th Principal Meridian, State of Minnesota, County of McLEOD

At the corner location shown on the sketch:

- On 06/20/2003 found BASE OF CAST IRON MONUMENT WITH TOP SHEARED OFF
DATE APPROX. 23-FEET SOUTH FROM C/L OF STATE HWY. NO. 7
- left monument as found lowered monument removed monument (explain)
- On 01/28/04 placed a 2" SQUARE TELSPAR MONUMENT WITH 4" DIAMETER
DATE CAST IRON CAP INSCRIBED MN/DOT PLS CORNER

SKETCH OF REFERENCE TIES

SECTION 30, TOWNSHIP 117, RANGE 27



SECTION 31, TOWNSHIP 117, RANGE 27

Statement of evidence for this corner location is on back of this page.

I hereby certify that this document was researched and prepared by me or under my direct supervision.

Signature *Keith Dahl* Date January 29, 2004 License No. 18418
KEITH DAHL
Title: Land Surveyor Professional Engineer County Surveyor County Engineer

A-339891

North Quarter Corner
Section 31, Township 117 North, Range 27 West, 5th Principal
Meridian

Statement of Evidence:

This corner was originally set by the government in 1856. E. N. Darling set a post in a marsh and marked an elm and an ash for bearing trees.

January, 1898. E.L. Higgins, county surveyor, shows a fence intersection being the corner. He had a distance of 2648.5 feet to the northeast corner of Section 31.

State Highway No. 7 right of way map shows the corner to be south of the center line and half way between the section corners.

January 26, 1979. McLeod County Surveyors set a nail and disc half way and on a straight line between the section corners and took reference ties. This is with a foot of the highway department distance to the section corners. Fence running south from the corner is 7 to 12 feet east of the north-south quarter line of Section 31. Mr. Jerald Gutzmer said he put this piece of fence in about 4 years ago and he knew it wasn't on the quarter line, due to the marshy ground. About 1000 feet south of the corner the fence falls along the quarter line.

July 17, 1980: McLeod County Surveyors replaced the nail & disc with a McLeod County cast iron monument.

July 20, 1989: McLeod County Surveyors found the monument and the reference ties good.

January 2, 1991: A Certificate of Location of Government Corner by Willard Pellinen, McLeod County Surveyor, Registration NO. 9626, was filed as Doc. No. 237105.

June 20, 2003: URS survey crew found the remains of the cast iron monument approximately 15-inches below grade. The top portion of the monument was sheared off. Two of the ties referenced on the Certificate of Location of Government Corner cited above were located and verified. The SE tie, a nail and disc on top of a fence post was deteriorated and a new nail & disc set on the SW face of said post. Distance was taken. The NE tie, nail and bottle cap on east face of a power pole was found to be good. The SW tie, a nail and bottle cap on east face of telephone pole, no longer existed. A new tie, SW of the monument, a nail & disc, was set on the west face of a 30-inch diameter deciduous tree. Distance was taken.

January 28, 2004. URS survey crew set 2" square Telspar Monument with 4" diameter Cast Iron Cap inscribed MN/DOT PLS Corner directly over base of in-place Cast Iron Monument.



OFFICE OF COUNTY RECORDER
MCLEOD COUNTY MINNESOTA

DOCUMENT NUMBER A-339910

CERTIFIED FILED AND/OR RECORDED ON
January 29, 2004, AT 11:15:00 AM

LYNN ETTIE SCHRUPP, COUNTY RECORDER
Fees:

EQUIPMENT FUND	\$3.00
SURCHARGE	4.50
SURCHARGE ERER	.50
GENERAL ABSTRACT	12.00
Total	\$20.00

Received from/return to:
MINNESOTA DEPARTMENT OF TRANSPORTATION
2505 TRANSPORTATION ROAD
P O BOX 768
WILLMAR, MN 56201- 0768

A-339910

6036

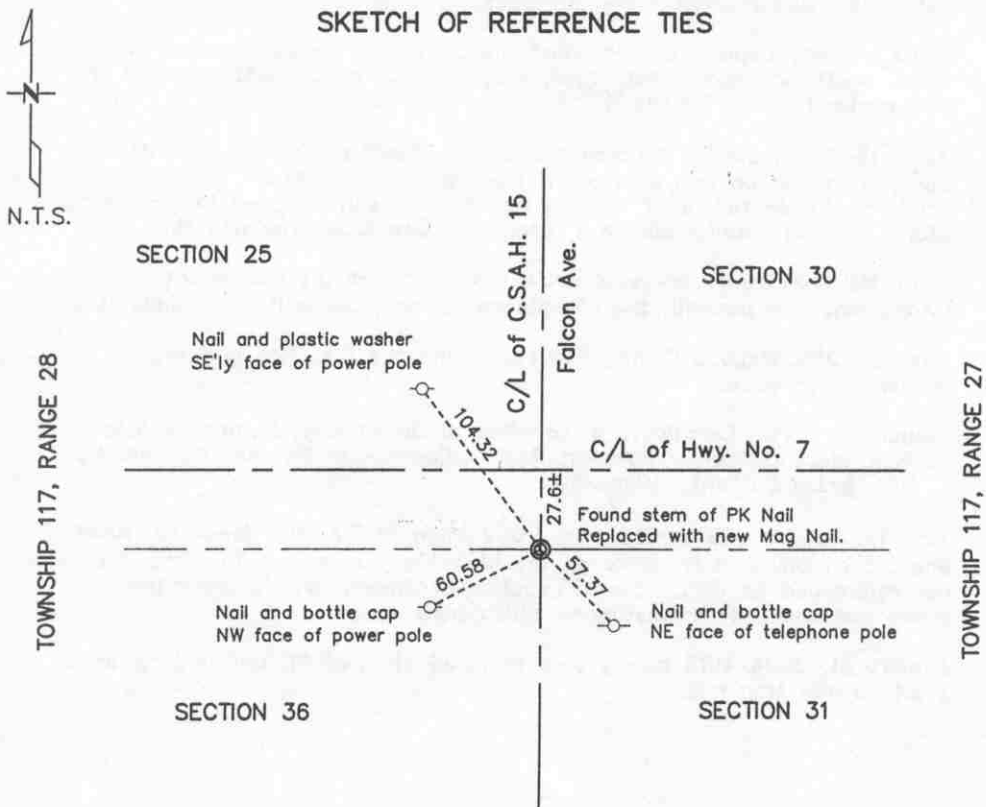
CERTIFICATE OF LOCATION OF GOVERNMENT CORNER

NORTHEAST Corner of Section 36, Township 117 N, Range 28 W
5th Principal Meridian, State of Minnesota, County of McLEOD

At the corner location shown on the sketch:

- On 6/19/03 found a STEM OF PK NAIL IN-PLACE
DATE (HEAD BROKE OFF) AT THE SURFACE OF ROAD
- left monument as found lowered monument removed monument (explain)
- On 1/21/04 placed a new Mag nail to replace the stem of the PK nail referenced above.
DATE

SKETCH OF REFERENCE TIES



Statement of evidence for this corner location is on back of this page.

I hereby certify that this document was researched and prepared by me or under my direct supervision.

Signature Keith Dahl Date January 29, 2004 License No. 18418
 Title: Land Surveyor Professional Engineer County Surveyor County Engineer

A-339910

Northeast Corner
Section 36, Township 117 North, Range 28 West, 5th Principal
Meridian

Statement of Evidence:

1855. John Ryan of the General Land Office established this corner. He set a post and marked 4 bearing trees.

State Highway Department assumed the corner at the intersection of north-south and east-west roads, which was about 30 feet south of the new center line of Highway No. 7.

June, 1969. McCombs Knutson Associates (Dickman Knutson, County Surveyor) found an iron pipe below the bituminous surface 27.50 feet south of the centerline of Highway No. 7. Knutson replaced the iron pipe with a McLeod County cast iron monument and took reference ties.

1980. McLeod County Surveyor set a P.K. Nail over the monument (monument now beneath the bituminous surface) using the reference ties.

July 13, 1989. McLeod County Surveyor found the P.K. Nail and the reference ties good.

January 1, 1991. Certificate of Location of Government Corner by Willard Pellinen, McLeod County Surveyor, Registration No. 9626; filed as Doc. No. 237121, McLeod County, Minnesota.

June 19, 2003. URS survey crew found stem of P.K. Nail in-place (head was broken off) and is visible on the bituminous surface. They found all ties referenced on Certificate of Location of Government Corner cited above and checked the distances, which were good.

January 21, 2004. URS survey crew removed stem of PK nail and replaced it with a new Mag nail.



OFFICE OF COUNTY RECORDER
MCLEOD COUNTY MINNESOTA



DOCUMENT NUMBER A-339908

CERTIFIED FILED AND/OR RECORDED ON
January 29, 2004, AT 11:15:00 AM

LYNN ETTIE SCHRUPP, COUNTY RECORDER
Fees:

EQUIPMENT FUND	\$3.00
SURCHARGE	4.50
SURCHARGE ERER	.50
GENERAL ABSTRACT	12.00
Total	\$20.00

A-339908

Received from/return to:
MINNESOTA DEPARTMENT OF TRANSPORTATION
2505 TRANSPORTATION ROAD
P O BOX 768
WILLMAR, MN 56201- 0768

6136

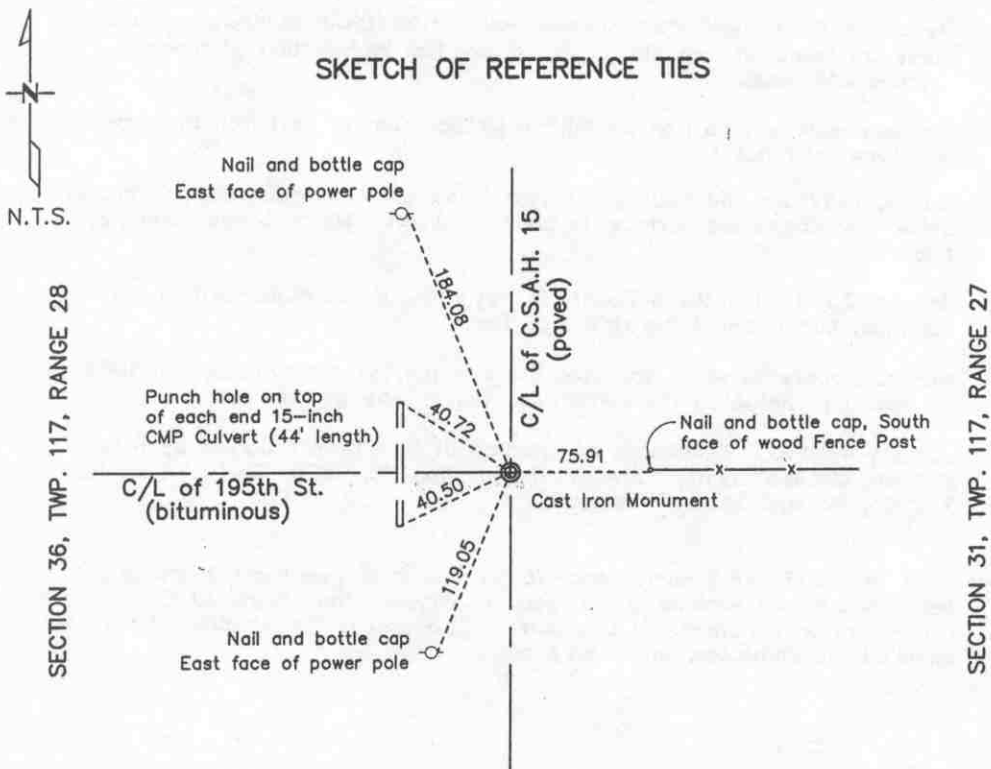
CERTIFICATE OF LOCATION OF GOVERNMENT CORNER

EAST QUARTER Corner of Section 36, Township 117 N, Range 28 W
5th Principal Meridian, State of Minnesota, County of MCLEOD

At the corner location shown on the sketch:

- On 6/19/03 found a CAST IRON MONUMENT IN-PLACE 6" BELOW
DATE BITUMINOUS SURFACE
- left monument as found lowered monument removed monument (explain)
- On _____ placed a _____
DATE

SKETCH OF REFERENCE TIES



Statement of evidence for this corner location is on back of this page.

I hereby certify that this document was researched and prepared by me or under my direct supervision.

Signature Keith Dahl Date January 29, 2004 License No. 18418
Title: Land Surveyor Professional Engineer County Surveyor County Engineer

A-339908

East Quarter Corner
Section 36, Township 117 North, Range 28 West, 5th Principal
Meridian

Statement of Evidence:

This corner was originally established by the government in 1855. John Ryan set a post and marked an ironwood and a hickory tree for bearing trees.

December 1968. McCombs Knutson Associates (Dickman Knutson, county surveyor) found an iron pin on the center line intersection of roads north-south-west.

Knutson replaced the iron pin with a McLeod County cast iron monument and took reference ties.

July 3, 1987. McLeod County Surveyor found the monument down 6 inches below the bituminous surface, in good condition. We took new reference ties.

January 30, 1991. McLeod County Surveyor found the monument in good condition and checked the reference ties.

McLeod County Surveyor accepted the iron pin found by Knutson in 1968 as having perpetuated the correct location of the quarter corner.

January 4, 1992. Certificate of Location of Government Corner by Willard Pellinen, McLeod County Surveyor, Registration No. 9626; filed as Doc. No. 242903, McLeod County, Minnesota.

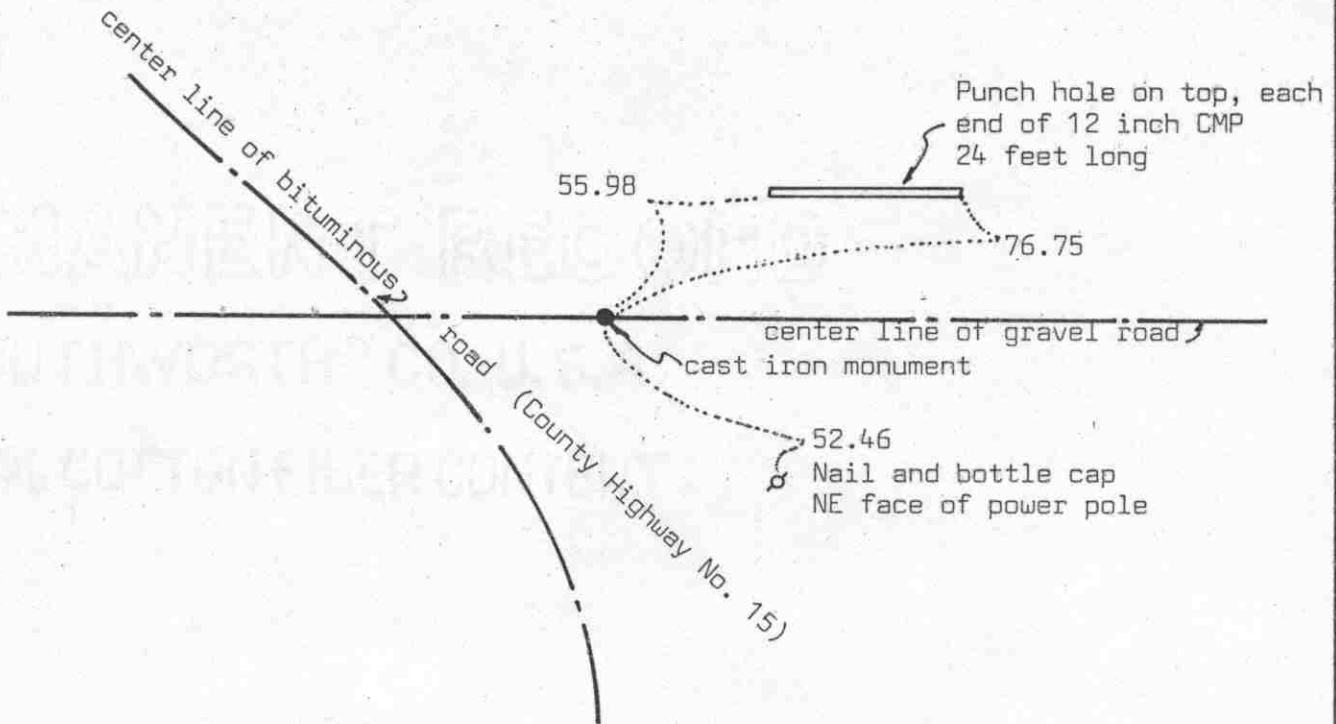
June 19, 2003. URS survey crew found cast iron monument in-place 6" below bituminous surface and in good condition. They found all ties referenced on Certificate of Location of Government Corner cited above and checked the distances, which were good.

Certificate of Location of Government Corner



SKETCH OF REFERENCE TIES

(NO SCALE)



Statement of evidence relative to this corner location on sheet 2

I hereby certify that this document was prepared by me or under my direct supervision.

Willard Pellinen

Willard Pellinen
McLeod County Surveyor
License No. 9626

Date 4/1/90

OFFICE OF THE COUNTY RECORDER
MCLEOD COUNTY, MINNESOTA.

I hereby certify that this document was filed in this office at 4 o'clock P.M. on the 4th day of April, 1990.

Carmen Ostlie, County Recorder

By _____, Deputy

Document No. 232650

NORTHEAST corner, Section 1, Township 116 North, Range 28 West

Certificate of Location of Government Corner

This corner was originally established by the Government Land Office in 1855. John Ryan set a post and took reference ties to 2 bearing trees.

1969. McCombs Knutson Associates, Dickman Knutson, county surveyor, dug for the corner and found a stone. This was within 10-12 feet of the government distance to the southwest corner of Section 31, T.117, R. 30. Knutson set a cast iron monument and took reference ties. Ortwin Seaman, road boss when this road was rebuilt, said they found stones at most of the corners along this line.

March 8, 1989. We found no reference ties remaining. We dug and found the corner down 6 inches below the road surface and took new reference ties.

We accept the monument set by Knutson as the correct location of the section corner because it perpetuates the location of the stone which we feel marked the corner.



OFFICE OF COUNTY RECORDER
MCLEOD COUNTY MINNESOTA



DOCUMENT NUMBER A-339889

CERTIFIED FILED AND/OR RECORDED ON
January 29, 2004, AT 11:15:00 AM

LYNN ETTIE SCHRUPP, COUNTY RECORDER
Fees:

EQUIPMENT FUND	\$3.00
SURCHARGE	4.50
SURCHARGE ERER	.50
GENERAL ABSTRACT	12.00
Total	\$20.00

A-339889

Received from/return to:
MINNESOTA DEPARTMENT OF TRANSPORTATION
2505 TRANSPORTATION ROAD
P O BOX 768
WILLMAR, MN 56201- 0768

6237

CERTIFICATE OF LOCATION OF GOVERNMENT CORNER

SOUTH QUARTER Corner of Section 31, Township 117 N, Range 27 W
5th Principal Meridian, State of Minnesota, County of McLEOD

At the corner location shown on the sketch:

On 06/26/2003 found a REMAINS OF CAST IRON MONUMENT, BROKEN, IN-PLACE
DATE IN C/L OF 190TH ST.

left monument as found lowered monument removed monument (explain)

On 01/26/2004 placed a 2" SQUARE TELSPAR MONUMENT WITH 4" DIAMETER
DATE CAST IRON CAP INSCRIBED MN/DOT PLS CORNER

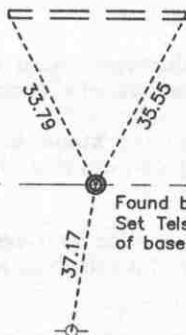
SKETCH OF REFERENCE TIES

SECTION 31, TOWNSHIP 117, RANGE 27



Punch hole in West
end of steel culvert

Punch hole in East
end of steel culvert



C/L of 190th St.
(gravel)

Found base of Cast Iron Monument,
Set Telspar Monument at location
of base of Cast Iron Monument.

Nail & Bottle Cap in SE
face of power pole, approx
4 feet above ground

SECTION 6, TOWNSHIP 116, RANGE 27

Statement of evidence for this corner location is on back of this page.

I hereby certify that this document was researched and prepared by me or under my direct supervision.

Signature Keith Bahl
KEITH BAHL

Date January 29, 2004 License No. 18418

Title: Land Surveyor Professional Engineer County Surveyor County Engineer

A-339889

**South Quarter Corner
Section 31, Township 117 North, Range 27 West, 5th Principal
Meridian**

Statement of Evidence:

This corner was originally established by John Ryan of the General Land Office in 1855. He set a post and had reference ties to 2 bearing trees.

November, 1968. McCombs Knutson Associates (Dickman Knutson, county surveyor) measured the south line of Section 31 and set a temporary corner on the center line of the road in lien with a fence to the north.

March, 1969. Knutson dug for the corner and found a stone and wood hub. He replaced the stone and wood hub with a McLeod County cast iron monument.

December 23, 1981. McLeod County Surveyor found the monument in good condition and took new reference ties.

March 8, 1989. McLeod County Surveyor found the top of the monument broken off but the new reference ties still good.

McLeod County Surveyor accepted the stone found by Knutson and the monument set by him as having perpetuated the correct location of the quarter corner.

January 4, 1992. Certificate of Location of Government Corner by Willard Pellinen, McLeod County Surveyor, Registration No. 9626; filed as Doc. No. 232642.

June 26, 2003. URS survey crew found the remains of a cast iron monument, and a 1/2-inch iron pipe, next to it, approximately 2-feet below grade. The monument base was broken into 2 pieces and the pipe was leaning West. The pipe & remains of the monument were removed and a PK-nail with flagging was placed into the center of the depression/ impression of the monument was brought to the surface, and the hole was back filled and packed. That position was accepted as the position of the corner. Ties were remeasured and are as shown on Sheet 1.

January 26, 2004. URS survey crew placed a 2" square Telspar Monument with a 4" diameter Cast Iron Cap inscribed MN/DOT PLS Corner at the location of the center of the base of the Cast Iron Monument recovered on June 26, 2003.



OFFICE OF COUNTY RECORDER
McLEOD COUNTY MINNESOTA

DOCUMENT NUMBER A-339888

CERTIFIED FILED AND/OR RECORDED ON
January 29, 2004, AT 11:15:00 AM

LYNN ETTIE SCHRUPP, COUNTY RECORDER
Fees:

EQUIPMENT FUND	\$3.00
SURCHARGE	4.50
SURCHARGE ERER	.50
GENERAL ABSTRACT	12.00
Total	\$20.00

A-339888

Received from/return to:
MINNESOTA DEPARTMENT OF TRANSPORTATION
2505 TRANSPORTATION ROAD
P O BOX 768
WILLMAR, MN 56201-0768

6238

CERTIFICATE OF LOCATION OF GOVERNMENT CORNER

SOUTHEAST Corner of Section 31, Township 117 N, Range 27 W

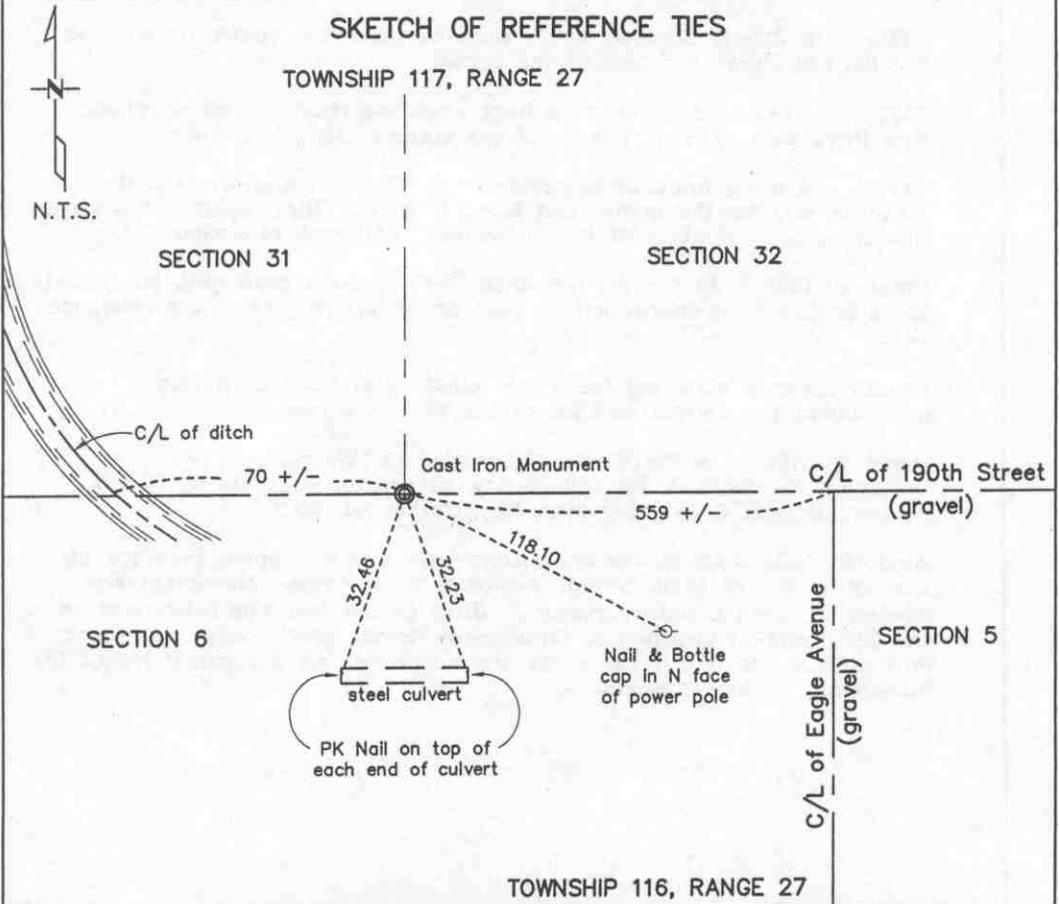
5th Principal Meridian, State of Minnesota, County of McLEOD

At the corner location shown on the sketch:

- On 06/19/2003 found a CAST IRON MONUMENT IN-PLACE, 4-INCHES
DATE BELOW GRADE, AT C/L OF 190th ST
- left monument as found lowered monument removed monument (explain)
- On _____ placed a _____
DATE _____

SKETCH OF REFERENCE TIES

TOWNSHIP 117, RANGE 27



Statement of evidence for this corner location is on back of this page.

I hereby certify that this document was researched and prepared by me or under my direct supervision.

Signature Keith Dahl Date January 29, 2004 License No. 18418
Title: Land Surveyor Professional Engineer County Surveyor County Engineer

A-339888

Southeast Corner
Section 31, Township 117 North, Range 27 West, 5th Principal
Meridian

Statement of Evidence:

1855: John Ryan of the Government Land Office set a post and had reference ties to two bearing trees.

1920: Old County Surveyor notes show he used this corner for a survey but did not show what was at the corner.

1970: Mr. Ortwin Seaman, road boss when the road was being rebuilt, said there were stones at most of the corners along this line.

1970: McCombs, Knutson Associates, Mr. Dickman Knutson, County Surveyor, dug for the corner and found a stone. They replaced the stone with a McLeod County cast iron monument, and took reference ties.

March 8, 1989: All the old reference ties had been destroyed, but County Surveyor found the monument in good condition. They took new reference ties.

County Surveyor accepted the stone found by Knutson as having perpetuated the correct location of the section corner.

March 24, 1990: A Certificate of Location of Government Corner, Document No. 232643, McLeod County, Minnesota, was filed by Willard Pellinen, McLeod County Surveyor, Registration No. 9626.

June 19, 2003: URS survey crew found cast iron monument in-place at the center line of 119th Street, 4-inches below grade. Monument was labeled: "McLeod County Surveyor". Three of the four ties referenced on the Certificate of Location of Government Corner cited above were found and verified. The fourth tie, a nail and bottle cap on a signpost NW of the monument, no longer exists.



OFFICE OF COUNTY RECORDER
McLEOD COUNTY MINNESOTA



DOCUMENT NUMBER A-339895

CERTIFIED FILED AND/OR RECORDED ON
January 29, 2004, AT 11:15:00 AM

LYNN ETTIE SCHRUPP, COUNTY RECORDER
Fees:

EQUIPMENT FUND	\$3.00
SURCHARGE	4.50
SURCHARGE ERER	.50
GENERAL ABSTRACT	12.00
Total	\$20.00

Received from/return to:
MINNESOTA DEPARTMENT OF TRANSPORTATION
2505 TRANSPORTATION ROAD
P O BOX 768
WILLMAR, MN 56201- 0768

A-339895

6140

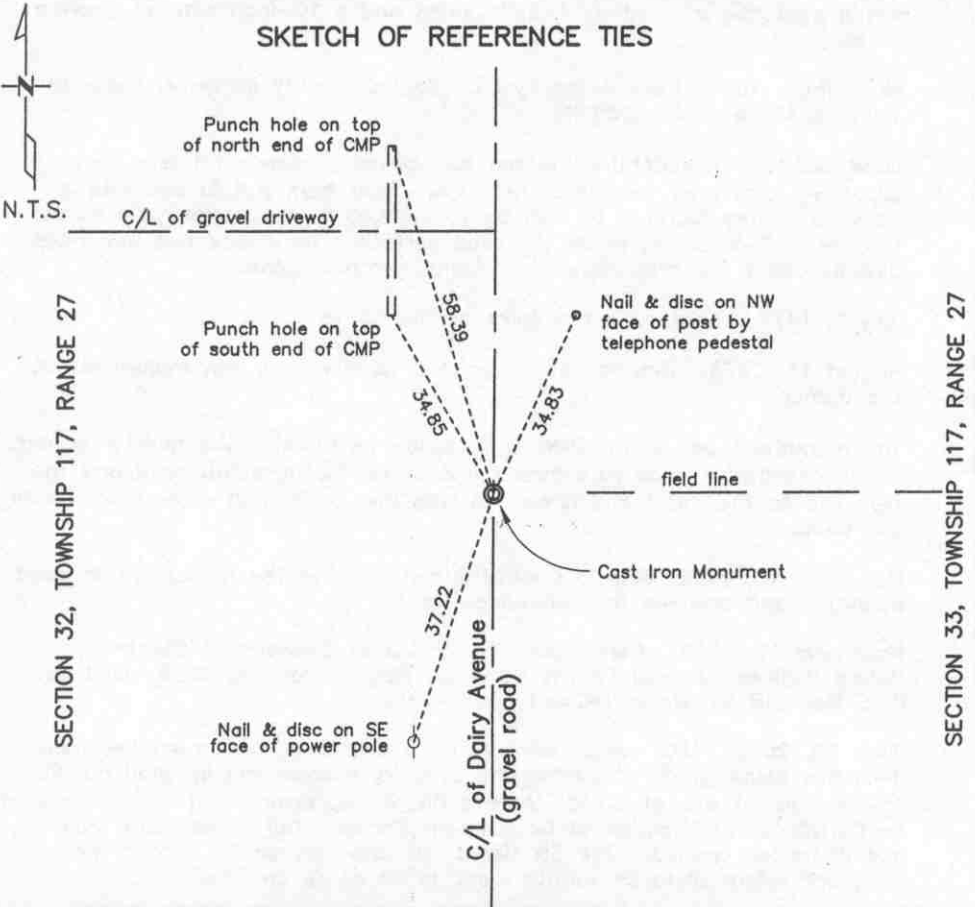
CERTIFICATE OF LOCATION OF GOVERNMENT CORNER

EAST QUARTER Corner of Section 32, Township 117 N, Range 27 W
5th Principal Meridian, State of Minnesota, County of McLEOD

At the corner location shown on the sketch:

- On 06/20/2003 found a CAST IRON MONUMENT IN-PLACE
DATE 6-INCHES BELOW GRADE, AT C/L OF DAIRY AVE.
- left monument as found lowered monument removed monument (explain)
- On _____ placed a _____
DATE _____

SKETCH OF REFERENCE TIES



Statement of evidence for this corner location is on back of this page.

I hereby certify that this document was researched and prepared by me or under my direct supervision.

Signature *Keith Dahl* Date January 29, 2004 License No. 18418
Title: Land Surveyor Professional Engineer County Surveyor County Engineer

East Quarter Corner
Section 32, Township 117 North, Range 27 West, 5th Principal
Meridian

Statement of Evidence:

1856. E.N. Darling of the General Land Office established this corner. He set a post and marked a 14-inch linden and a 10-inch elm for bearing trees.

November, 1897. Field notes by E.L. Higgins, county surveyor, show he found a stone at the corner.

June 28, 1977. McCombs Knutson Associates (Dickman Knutson, county surveyor) excavated for the corner, John Tupa from Hutchinson with a backhoe. They found a 16 inch by 10 inch by 6 inch stone, pointed at top, down 3-1/2 feet below the road surface. They took ties and down directly below the first stone they found another stone.

July 5, 1977. Knutson set a spike at the corner.

August 15, 1978. Knutson set a McLeod County cast iron monument at the corner.

The monument set by Knutson is accepted as marking the quarter corner. It fits occupation lines (the center line of the north-south road and the field line to the east) and it perpetuates the location of older monuments, the stones.

November 13, 1992. McLeod County Surveyor found the monument in good condition and checked the reference ties.

November 15, 1992. Certificate of Location of Government Corner by Willard Pellinen, McLeod County Surveyor, Registration No. 9626; filed as Doc. No. 248391, McLeod County, Minnesota.

June 20, 2003. URS survey crew found a cast iron monument in-place 6-inches below grade at center line of Dairy Avenue and in good condition. The monument was stamped "McLeod County Surveyor". All ties referenced on Certificate of Location of Government Corner cited above were found and distances verified. The SW tie, a nail and disc on SE face of power pole, had minor distance variation and is so noted on Sheet 1.



OFFICE OF COUNTY RECORDER
MCLEOD COUNTY MINNESOTA



DOCUMENT NUMBER A-339897

CERTIFIED FILED AND/OR RECORDED ON
January 29, 2004, AT 11:15:00 AM

LYNN ETTIE SCHRUPP, COUNTY RECORDER
Fees:

EQUIPMENT FUND	\$3.00
SURCHARGE	4.50
SURCHARGE ERER	.50
GENERAL ABSTRACT	12.00
Total	\$20.00

Received from/return to:
MINNESOTA DEPARTMENT OF TRANSPORTATION
2505 TRANSPORTATION ROAD
P O BOX 768
WILLMAR, MN 56201- 0768

A-339897

5040

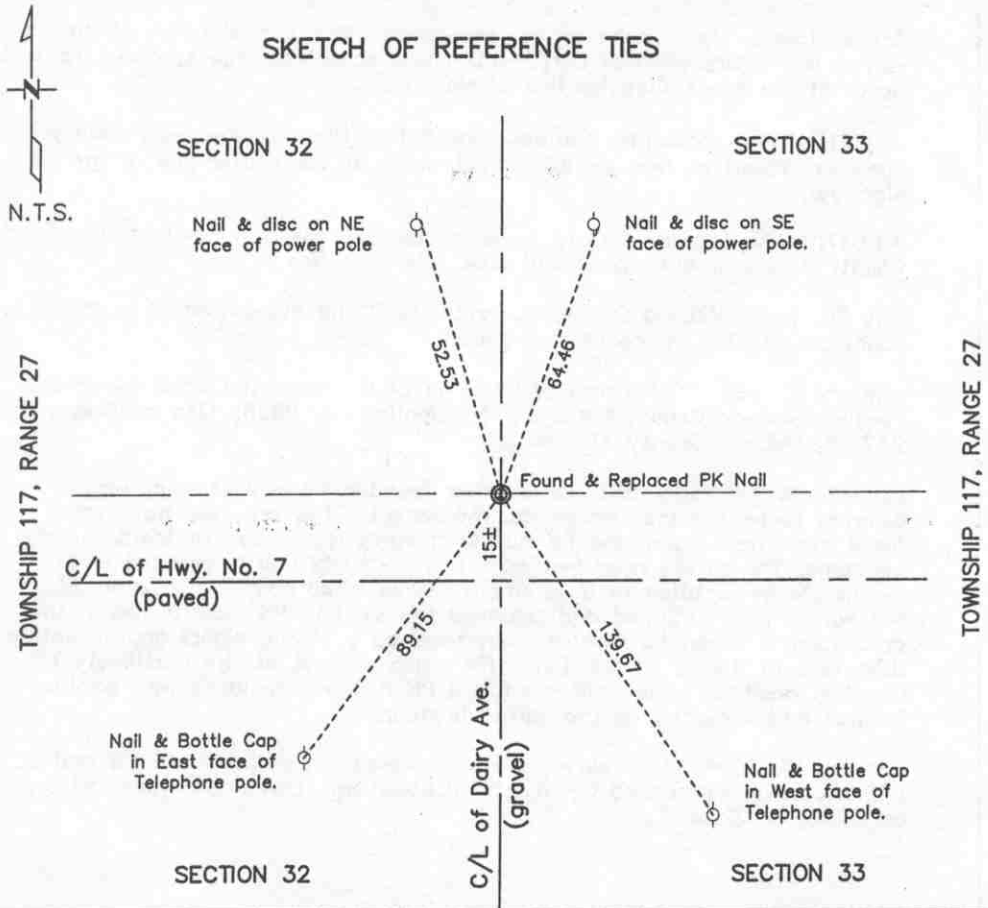
CERTIFICATE OF LOCATION OF GOVERNMENT CORNER

NORTHEAST Corner of Section 32, Township 117 N, Range 27 W
5th Principal Meridian, State of Minnesota, County of MCLEOD

At the corner location shown on the sketch:

- On 06/23/2003 found a PK NAIL IN-PLACE
DATE AT SURFACE ON C/L DAIRY AVE.
- left monument as found lowered monument removed monument (explain)
- On 06/27/2003 placed a NEW PK NAIL AT SAME LOCATION AS
DATE PK RECOVERED ON 06/23/2003

SKETCH OF REFERENCE TIES



Statement of evidence for this corner location is on back of this page.

I hereby certify that this document was researched and prepared by me or under my direct supervision.

Signature Keith Dahl Date January 29, 2004 License No. 18418
KEITH DAHL
Title: Land Surveyor Professional Engineer County Surveyor County Engineer

A-339897

Northeast Corner
Section 32, Township 117 North, Range 27 West, 5th Principal
Meridian

Statement of Evidence:

This corner was originally set by the government in 1856. E.N. Darling set a post and marked 1 linden, 2 elms and 1 oak for bearing trees.

State Highway No. 7 right of way map shows this corner to be on the center line intersection of north-south and east-west roads, about 15 feet north of the present center line of No. 7.

July 11, 1977. McCombs Knutson Associates (Dickman Knutson, county surveyor) found an iron pin 15 ± feet north of the center line of the highway.

July 17, 1980. McLeod County Surveyor replaced the iron pin with a McLeod County cast iron monument and took reference ties.

July 20, 1989. McLeod County Surveyor found the monument in good condition and the reference ties good.

January 3, 1991. Certificate of Location of Government Corner by Willard Pellinen, McLeod County Surveyor, Registration No. 9626; filed as Doc. No. 237106, McLeod County, Minnesota.

June 23 & 27, 2003. URS survey crew found a PK nail at what was believed to be the location of the monument. The crew did not search for a monument below the PK nail in Highway No. 7 due to traffic safety concerns. The survey crew verified the 2 northerly ties referenced in the Certificate of Location of Government Corner cited above. On June 27, the survey crew returned and removed the existing PK nail to search the area using a magnetic locator. They received a strong signal approximately 0.35 feet to the SE of the found PK which did not fit the Certificate of Location position. The originally found PK nail was replaced with another PK nail and accepted as the corner location.

January 19, 2004. URS survey crew recovered and remeasured SW and SE ties shown on referenced Certificate of Location. Distances measured are as shown on Sheet 1.



DOCUMENT NUMBER A-339896

CERTIFIED FILED AND/OR RECORDED ON
January 29, 2004, AT 11:15:00 AM

LYNN ETTIE SCHRUPP, COUNTY RECORDER

Fees:

EQUIPMENT FUND	\$3.00
SURCHARGE	4.50
SURCHARGE ERER	.50
GENERAL ABSTRACT	12.00
Total	\$20.00

Received from/return to:
MINNESOTA DEPARTMENT OF TRANSPORTATION
2505 TRANSPORTATION ROAD
P O BOX 768
WILLMAR, MN 56201- 0768

A-339896

6039

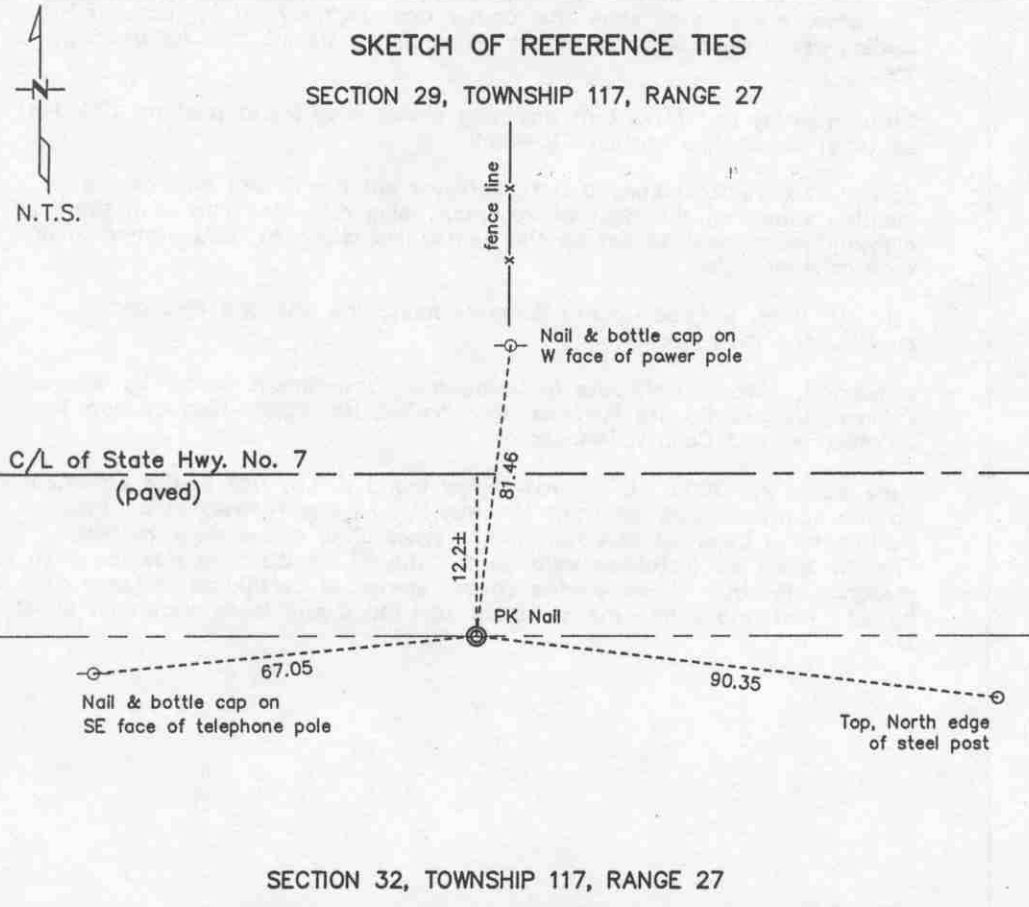
CERTIFICATE OF LOCATION OF GOVERNMENT CORNER

NORTH QUARTER Corner of Section 32, Township 117 N, Range 27 W
5th Principal Meridian, State of Minnesota, County of McLEOD

At the corner location shown on the sketch:

- On 06/23/2003 found a PK NAIL ON SURFACE OF PAVEMENT
DATE 12.2± SOUTH FROM CENTERLINE OF STATE HWY. NO. 7
- left monument as found lowered monument removed monument (explain)
- On _____ placed a _____
DATE _____

SKETCH OF REFERENCE TIES SECTION 29, TOWNSHIP 117, RANGE 27



SECTION 32, TOWNSHIP 117, RANGE 27

Statement of evidence for this corner location is on back of this page.

I hereby certify that this document was researched and prepared by me or under my direct supervision.

Signature Keith Dahl Date January 29, 2004 License No. 18418
 Title: Land Surveyor Professional Engineer County Surveyor County Engineer

North Quarter Corner
Section 32, Township 117 North, Range 27 West, 5th Principal
Meridian

Statement of Evidence:

The government notes show this corner was originally set in 1856. E.N. Darling set a post and marked an aspen and a walnut tree for bearing trees.

State Highway No. 7 right of way map shows they found a stone 12.2 feet south of center line station 710+36.2.

January 24, 1979. McLeod County Surveyor set a nail and disc at the location shown on the right of way map using reference ties from the highway department to set up the center line alignment and stationing and took reference ties.

July 20, 1989. McLeod County Surveyor found the nail and disc and checked the reference ties.

January 4, 1992. Certificate of Location of Government Corner by Willard Pellinen, McLeod County Surveyor, Registration No. 9626; filed as Doc. No. 242894, McLeod County, Minnesota.

June 23 & 27, 2003. URS survey crew found a P.K. Nail in the pavement on the south shoulder of Trunk Highway 7. All ties referenced on the Certificate of Location of Government Corner cited above were verified. The SW & NE tie distances were good. The SE tie distance was found to disagree with that shown on the above referenced Certificate of Location by 0.17 feet and a new measurement was made and is as shown on Sheet 1.



DOCUMENT NUMBER A-339893

CERTIFIED FILED AND/OR RECORDED ON
January 29, 2004, AT 11:15:00 AM

LYNN ETTE SCHRUPP, COUNTY RECORDER

Fees:	EQUIPMENT FUND	\$3.00
	SURCHARGE	4.50
	SURCHARGE ERER	.50
	GENERAL ABSTRACT	12.00
	Total	\$20.00

Received from/return to:
MINNESOTA DEPARTMENT OF TRANSPORTATION
2505 TRANSPORTATION ROAD
P O BOX 768
WILLMAR, MN 56201- 0768

A-339893

6239

CERTIFICATE OF LOCATION OF GOVERNMENT CORNER

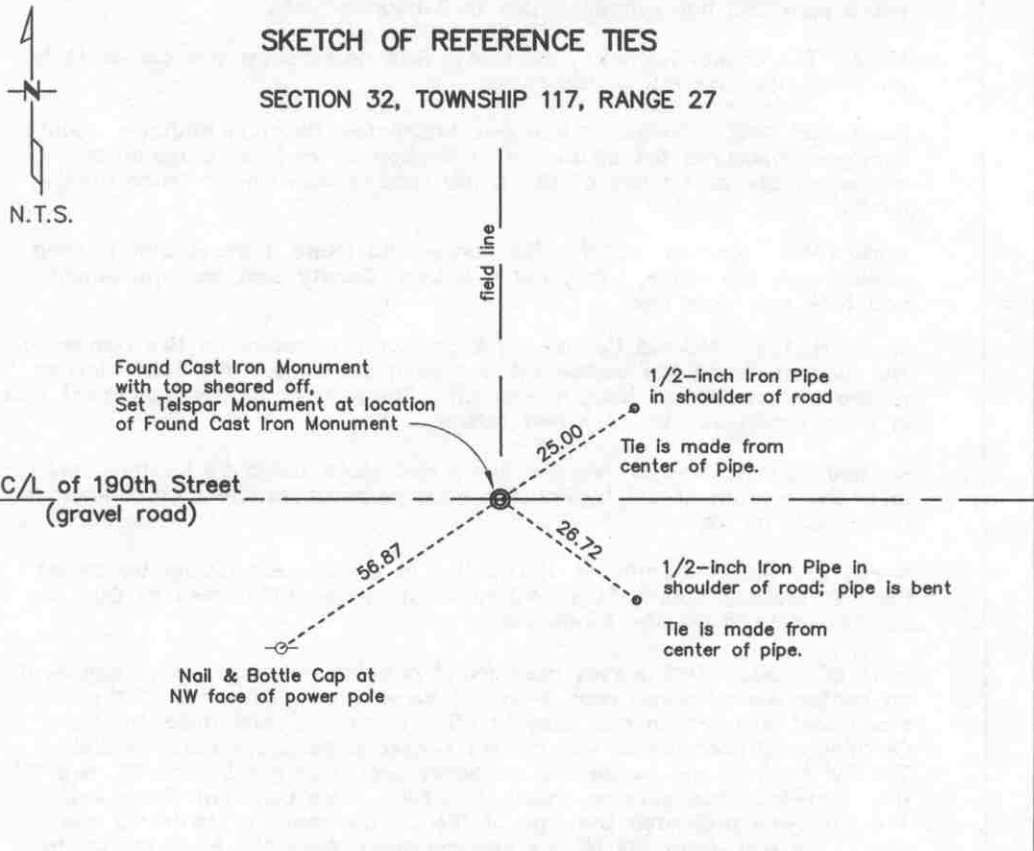
SOUTH QUARTER Corner of Section 32, Township 117 N, Range 27 W
5th Principal Meridian, State of Minnesota, County of McLEOD

At the corner location shown on the sketch:

- On 06/20/2003 found a REMAINS OF CAST IRON MONUMENT WITH
DATE TOP SHEARED OFF AT C/L OF 190th ST
- left monument as found lowered monument removed monument (explain)
- On 01/27/2004 placed a 2" SQUARE TELSPAR MONUMENT WITH 4" DIAMETER
DATE CAST IRON CAP INSCRIBED MN/DOT PLS CORNER

SKETCH OF REFERENCE TIES

SECTION 32, TOWNSHIP 117, RANGE 27



SECTION 5, TOWNSHIP 116, RANGE 27

Statement of evidence for this corner location is on back of this page.

I hereby certify that this document was researched and prepared by me or under my direct supervision.

Signature *Keith Dahl* Date January 29, 2004 License No. 18418
KEITH DAHL

Title: Land Surveyor Professional Engineer County Surveyor County Engineer

**South Quarter Corner
Section 32, Township 117 North, Range 27 West, 5th Principal
Meridian**

Statement of Evidence:

1855. John Ryan of the General Land Office established this corner. He set a post and had reference ties to 2 bearing trees.

1954. The county highway department field notes show this corner to be on the center line P.I. of the road.

November, 1968. McCombs Knutson Associates, Dickman Knutson, county surveyor, measured the south line of Section 32 and set a temporary corner on the center line of the gravel road, in line with a fence running north.

April, 1969. Knutson dug for the corner and found a stone with a wood stake below the stone. They set a McLeod County cast iron monument and took reference ties.

March 8, 1989. McLeod County Surveyor found no reference ties remaining. We dug and found the monument had been disturbed. The top 6 inches of the monument had been broken off. The bottom of the monument was in good condition. We took new reference ties.

McLeod County Surveyor felt the stone and stake found by Knutson and later the monument set by Knutson have perpetuated the correct location of the quarter corner.

March 24, 1990. Certificate of Location of Government Corner by Willard Pellinen, McLeod County Surveyor, Registration No. 9626; filed as Doc. No. 232641, McLeod County, Minnesota.

June 20, 2003. URS survey crew found remains of a cast iron monument on center line of gravel road 4-inches below grade. The top of the monument was broken and sheared off. Three ties referenced on the Certificate of Location of Government Corner cited above were verified. The SW tie, nail and bottle cap on power pole, was good. The NE and SE ties, half-inch iron pipe on shoulder of road, were bent but firmly set. The surveyors measured the pipe of the SE tie from the center of the pipe. The pipe from the NE tie was measured from the edge facing the monument. The NE and SE tie distances were measured and are as shown on Sheet 1.

January 27, 2004. URS survey crew removed damaged Cast Iron Monument. Base of Monument was not damaged and was plumb and firmly set. URS survey crew set a 2" square Telspar Monument with 4" diameter Cast Iron Cap inscribed MN/DOT PLS Corner at location of base of Cast Iron Monument. On this date the NE tie was firmly reset at distance shown on Sheet 1.

A-339893



MCLEOD COUNTY

OFFICE OF COUNTY RECORDER
MCLEOD COUNTY MINNESOTA

DOCUMENT NUMBER A-339894

CERTIFIED FILED AND/OR RECORDED ON
January 29, 2004, AT 11:15:00 AM

LYNN ETTIE SCHRUPP, COUNTY RECORDER

Fees:

EQUIPMENT FUND	\$3.00
SURCHARGE	4.50
SURCHARGE ERER	.50
GENERAL ABSTRACT	12.00
Total	\$20.00

Received from/return to:
MINNESOTA DEPARTMENT OF TRANSPORTATION
2505 TRANSPORTATION ROAD
P O BOX 768
WILLMAR, MN 56201-0768

A-339894

6240

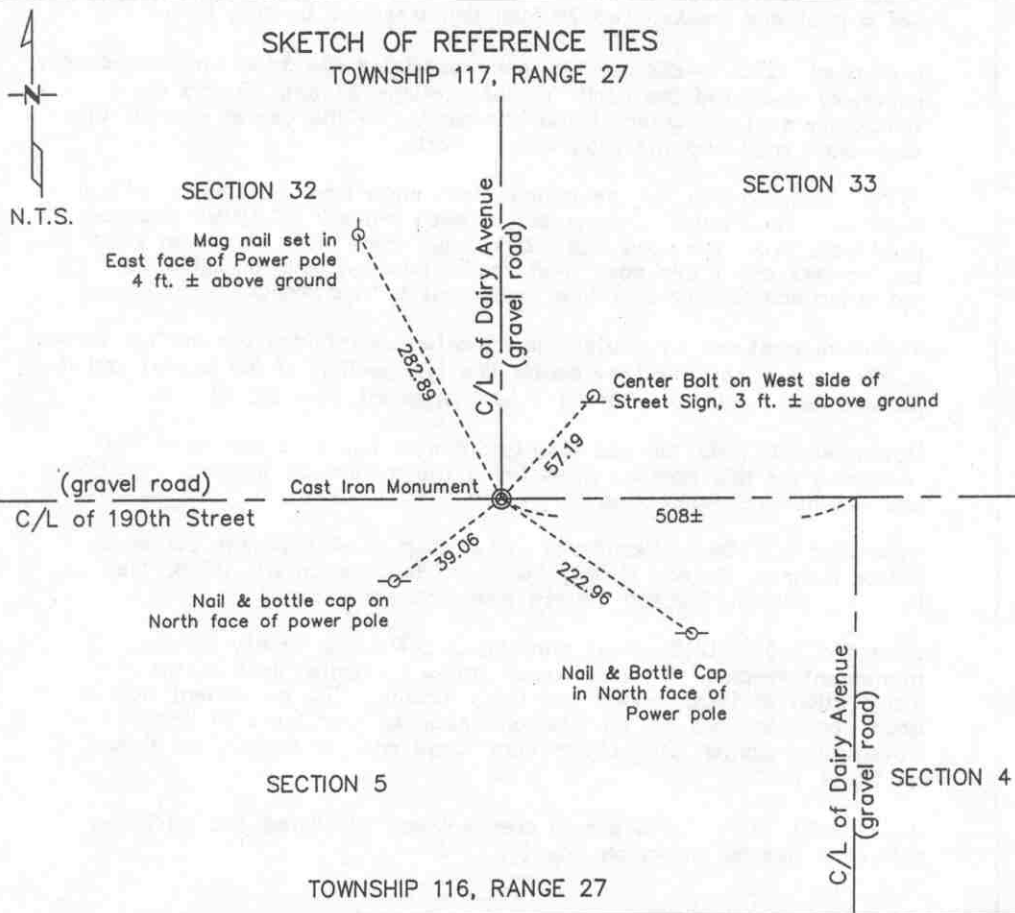
CERTIFICATE OF LOCATION OF GOVERNMENT CORNER

SOUTHEAST Corner of Section 32, Township 117 N, Range 27 W
5th Principal Meridian, State of Minnesota, County of McLEOD

At the corner location shown on the sketch:

- On 06/20/2003 found a CAST IRON MONUMENT, 3-INCHES
DATE BELOW GRADE AT C/L OF DAIRY AVE & 190th ST
- left monument as found lowered monument removed monument (explain)
- On _____ placed a _____
DATE _____

SKETCH OF REFERENCE TIES TOWNSHIP 117, RANGE 27



Statement of evidence for this corner location is on back of this page.

I hereby certify that this document was researched and prepared by me or under my direct supervision.

Signature *Keith Dahl* Date January 29, 2004 License No. 18418
 Title: Land Surveyor Professional Engineer County Surveyor County Engineer

A-339894

Southeast Corner
Section 32, Township 117 North, Range 27 West, 5th Principal
Meridian

Statement of Evidence:

1855. John Ryan of the General Land Office established this corner. He set a post and marked two 16 inch ash trees for bearing trees.

November, 1968. McCombs Knutson Associates (Dickman Knutson, county surveyor) measured the north line of Sections 32 and 33 and set a temporary section corner at the intersection of the center lines of the east-west road and the road running north.

1970. Knutson dug for the corner, John Tupa from Hutchinson with a backhoe. They found a stone and a wood stake. Mr. Ortwin Seaman, road boss when the road was rebuilt, said there were stones at most of the corners along this east-west road. Knutson took available ties and set a McLeod County cast iron monument at the corner.

The monument set by Knutson is accepted as marking the section corner. It fits occupation lines (the center line intersection of the roads) and it perpetuates the location of an older monument (the stone).

November 19, 1992. McLeod County Surveyor found no reference ties remaining for this corner. They found the monument in good condition and set new reference ties.

November 20, 1992. Certificate of Location of Government Corner by Willard Pellinen, McLeod County Surveyor, Registration No. 9626; filed as Doc. No. 249061, McLeod County, Minnesota.

June 20, 2003. URS survey crew found a McLeod County Surveyor monument in-place 3-inches below grade on center lines of the intersection of 190th Street and Dairy Avenue. The monument was in good condition. Two of the ties referenced on Certificate of Location of Government Corner cited above were found and remeasured as shown on Sheet 1.

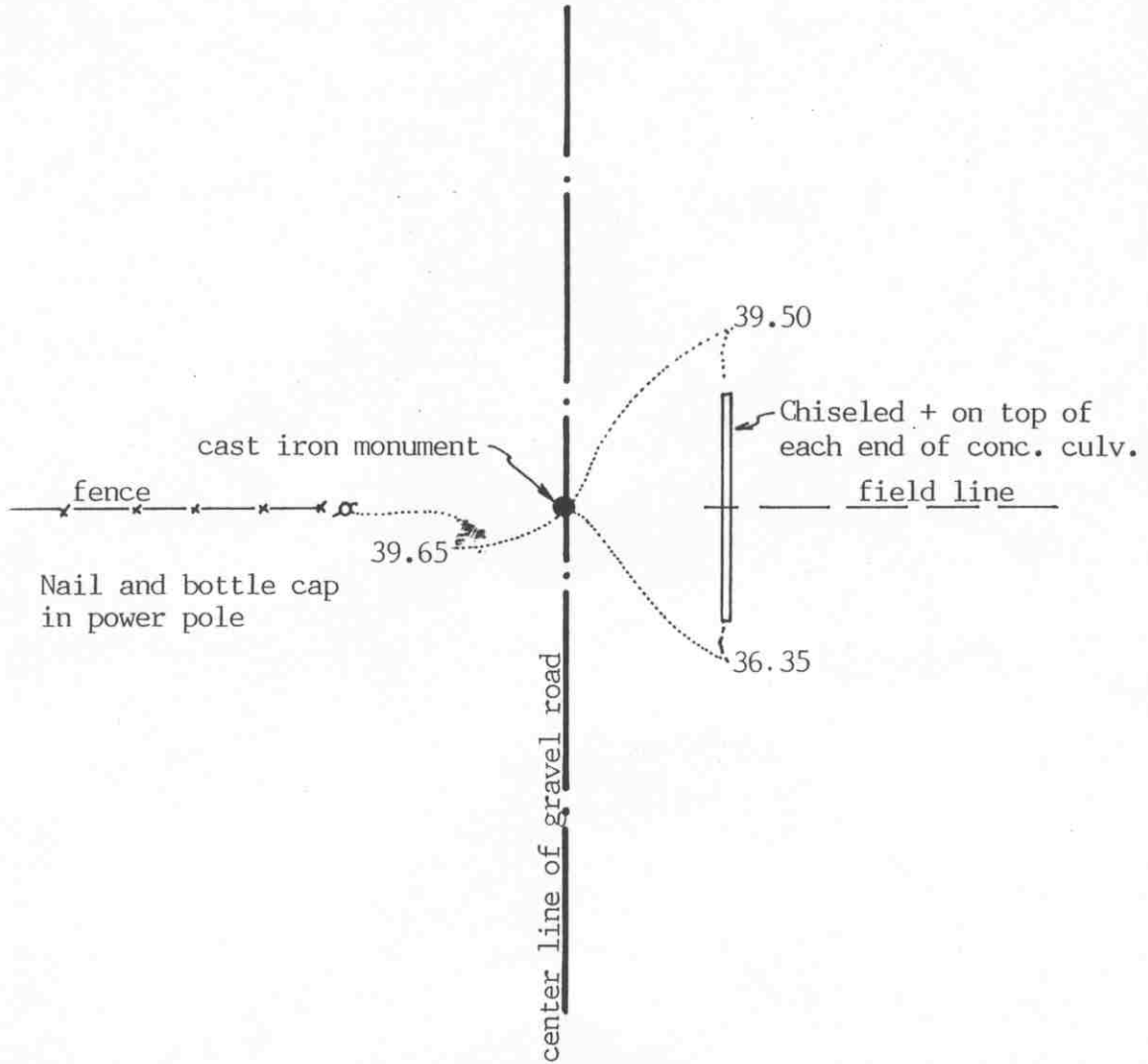
January 20, 2004. URS survey crew set and measured two additional reference ties as shown on Sheet 1.

Certificate of Location of Government Corner

SKETCH OF REFERENCE TIES (NO SCALE)

SECTION 33

SECTION 34



Statement of evidence relative to this corner location on sheet 2

I hereby certify that this document was prepared by me or under my direct supervision.

Willard Pellinen
 Willard Pellinen
 McLeod County Surveyor
 License No. 9626

Date Nov. 16, 1992

OFFICE OF THE COUNTY RECORDER
MCLEOD COUNTY, MINNESOTA.

I hereby certify that this document was filed in this office at 9 o'clock A. M. on the 20th day of November, 1992.

Carmen Helie Gulder, County Recorder
 By _____, Deputy

Document No. 248092

EAST QUARTER corner, Section 33, Township 117 North, Range 27 West

Certificate of Location of Government Corner

1856. E.N.Darling of the General Land Office established this corner. He set a post and marked a 5 inch ironwood and a 10 inch elm for bearing trees.

1897. E.L.Higgins, county surveyor, found a stone at the corner and measured 2626 feet to the southeast corner and 2650.6 feet to the northeast corner of Section 33.

June 28, 1977. McCombs Knutson Associates (Dickman Knutson, county surveyor) dug for the corner. Down below the original road bed they found a 5 inch by 10 inch high stone, a rotted wood stake beside it. They took available reference ties. This was on the center line of the north-south road on the easterly extension of a fence from the west.

July 7, 1977. Knutson set a spike at the corner.

August 30, 1978. Knutson set a McLeod County cast iron monument at the corner.

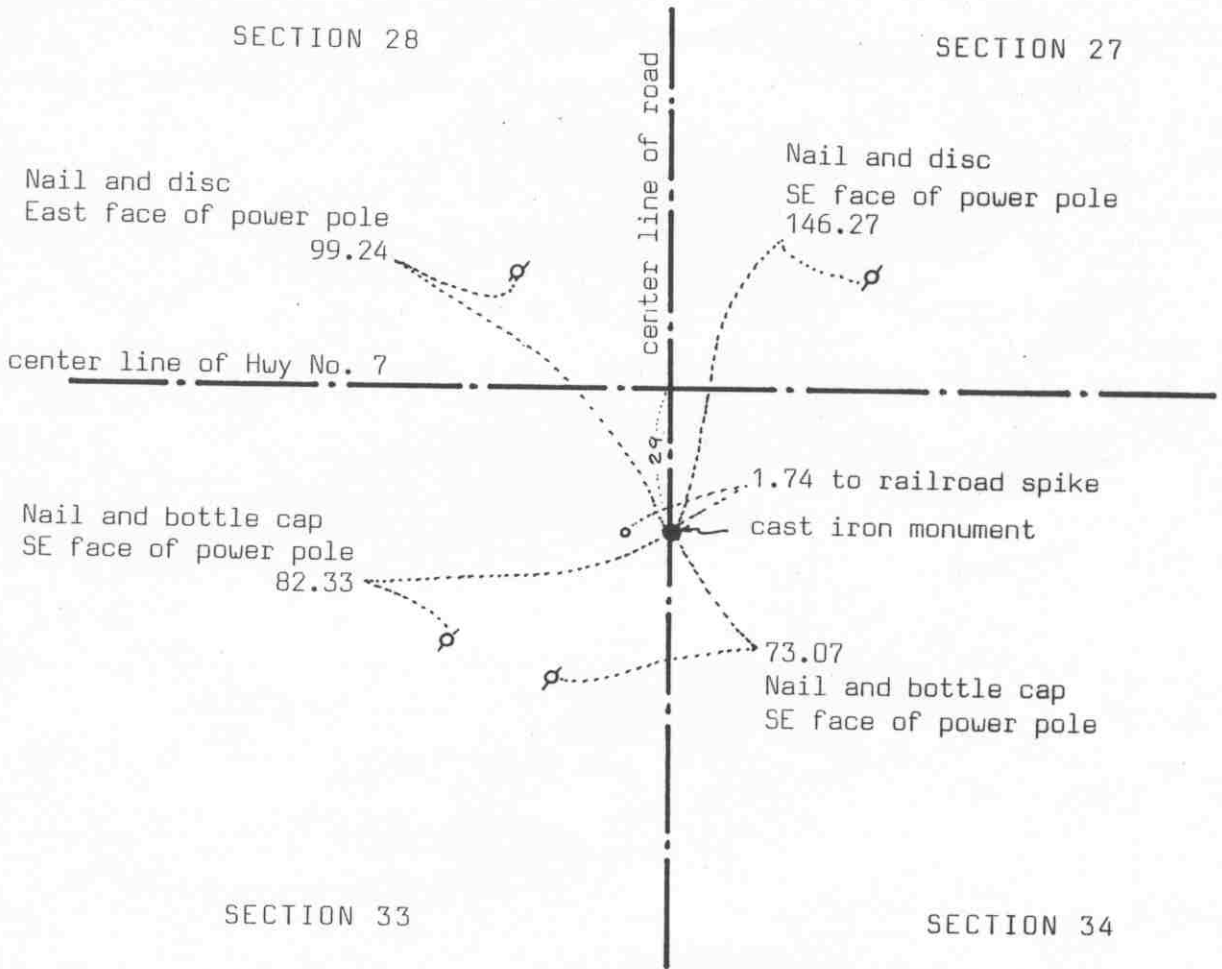
The monument set by Knutson is accepted as marking the quarter corner. It fits occupation lines (the center line of the road and the fence) and it perpetuates the location of an older monument, the stone.

November 13, 1992. We found the monument in good condition and checked the reference ties.

NORTHEAST corner, Section 33, Township 117 North, Range 27 West

Certificate of Location of Government Corner

SKETCH OF REFERENCE TIES (NO SCALE)



Statement of evidence relative to this corner location on sheet 2

I hereby certify that this document was prepared by me or under my direct supervision.

Willard Pellinen

Willard Pellinen
McLeod County Surveyor
License No. 9626

Date Jan 5, 1991

OFFICE OF THE COUNTY RECORDER
MCLEOD COUNTY, MINNESOTA.

I hereby certify that this document was filed in this office at 3 o'clock P.M. on the 15th day of Jan, 1991.

Carmen Ostlie, County Recorder

By _____, Deputy

Document No. 237108

Certificate of Location of Government Corner

The government notes show this corner was established in 1856 by E.N.Darling. He set a post and marked two ash trees and two elm trees for bearing trees.

State Highway No. 7 right of way map shows this corner to be 29 feet south of center line P.I. station 789+66.6.

January 24, 1979. We found an iron pin at P.I. station 789+66.6 using reference ties from the highway department. We set a spike 29.00 feet south of the iron pin and took reference ties.

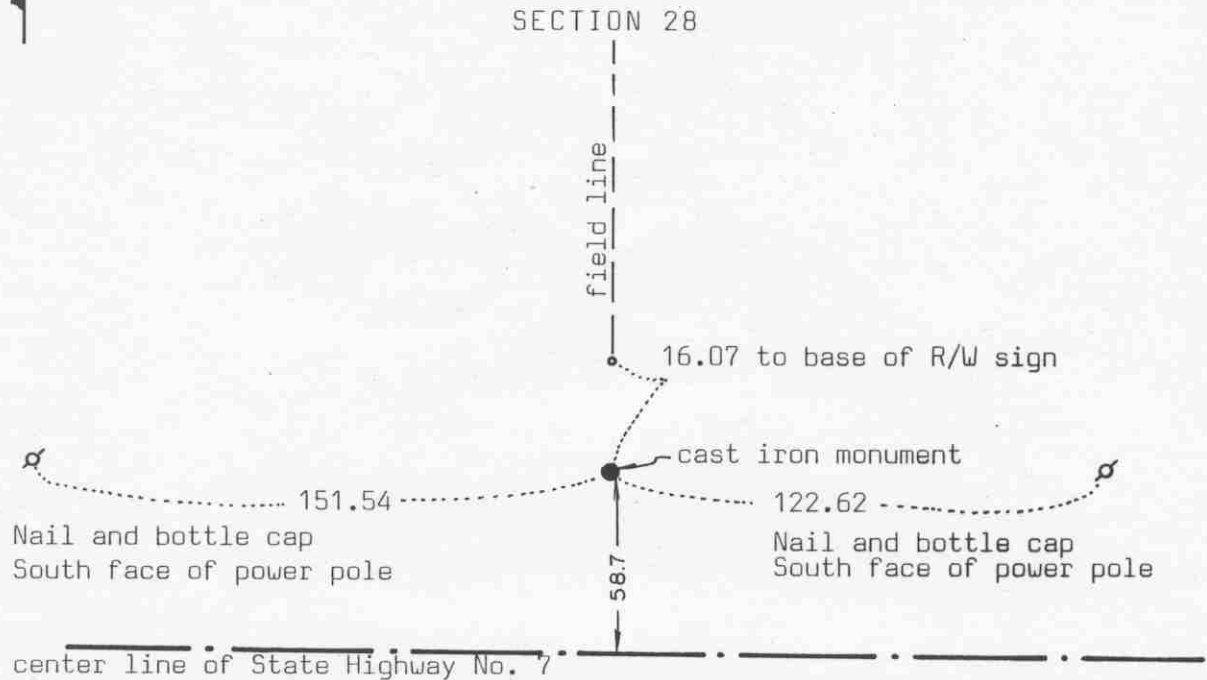
July 17, 1980. We set a McLeod County cast iron monument at the corner.

July 20, 1989. We found the monument in good condition and took new reference ties.

NORTH QUARTER corner, Section 33, Township 117 North, Range 27 West

Certificate of Location of Government Corner

SKETCH OF REFERENCE TIES (NO SCALE)



SECTION 33

Statement of evidence relative to this corner location on sheet 2

I hereby certify that this document was prepared by me or under my direct supervision.

Willard Pellinen

Willard Pellinen
McLeod County Surveyor
License No. 9626

Date Jan. 4, 1991

OFFICE OF THE COUNTY RECORDER MCLEOD COUNTY, MINNESOTA.

I hereby certify that this document was filed in this office at 3 o'clock P.M. on the 15th day of Jan, 1991.

Carmen Ostlie, County Recorder

By _____, Deputy

Document No. 237109

Certificate of Location of Government Corner

The government notes show this corner was originally set by E.N.Darling in 1856. He set a post and marked 1 elm and 1 bur oak for bearing trees.

November, 1897. Field notes by E.L.Higgins, county surveyor, show he found nothing at the corner. He set the corner on a straight line and split between the section corners.

January 30, 1979. We found nothing at the corner. We set a cast iron monument on a straight line and split between the section corners just as Higgins did in 1897.

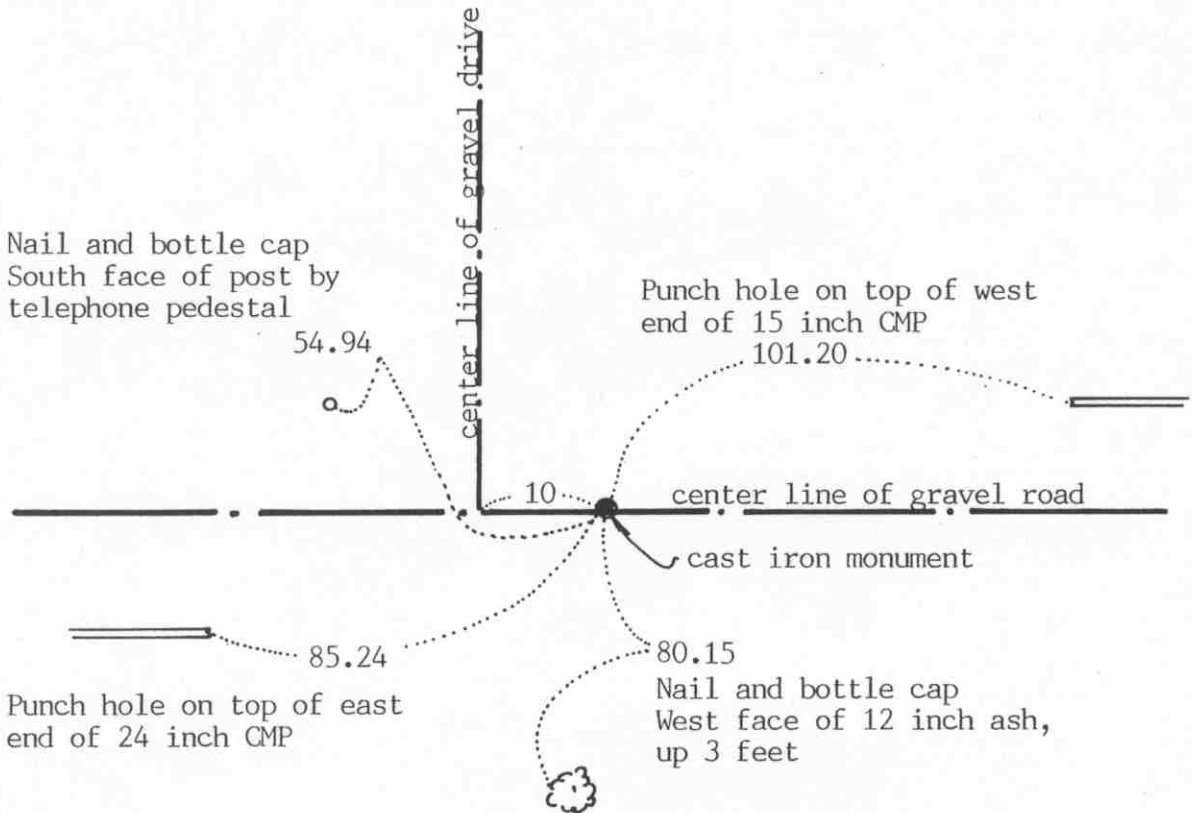
July 20, 1989. We found the cast iron monument in good condition and we took new reference ties.

SOUTH QUARTER corner, Section 33, Township 117 North, Range 27 West

Certificate of Location of Government Corner

SKETCH OF REFERENCE TIES

(NO SCALE)



Statement of evidence relative to this corner location on sheet 2

I hereby certify that this document was prepared by me or under my direct supervision.

Willard Pellinen

Willard Pellinen
McLeod County Surveyor
License No. 9626

Date November 20, 1992

OFFICE OF THE COUNTY RECORDER
MCLEOD COUNTY, MINNESOTA.

I hereby certify that this document was filed in this office at 9 o'clock A. M. on the 24th day of November, 19 92.

Carmin Holvick Gulder, County Recorder

By _____, Deputy

Document No. 249063

Certificate of Location of Government Corner

1855. This corner was originally established by John Ryan of the General Land Office. He set a post and marked a 10 inch oak and a nine inch elm for bearing trees.

November 22, 1968. McCombs Knutson Associates (Dickman Knutson, county surveyor) measured the north line of Section 33 and set a temporary quarter corner on the center line of the east-west road in line with a fence to the north. Ortwin Seamann, road boss when the road was rebuilt, said they found a stone at most of the government corners.

1970. McCombs Knutson dug for the corner at the temporary corner and found a stone down in the original ground, below the road bed. They took available reference ties and set a McLeod County cast iron monument at the corner.

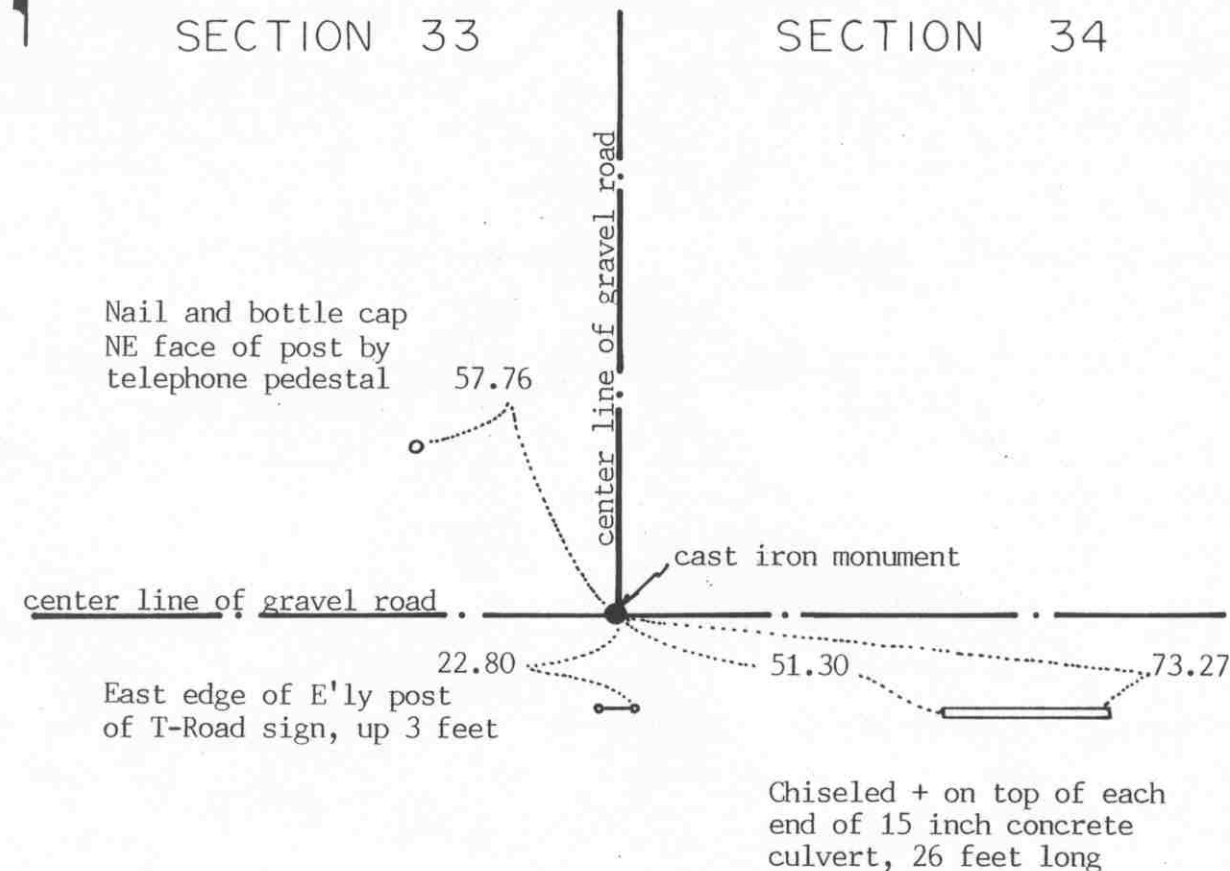
The monument set by Knutson is accepted as marking the quarter corner. It fits occupation lines (The center line of the road and the fence) and it perpetuates the location of an older monument, the stone.

November 19, 1992. Found no old reference ties remaining. We found the monument in good condition down 6 inches below the gravel surface and set new reference ties.

SOUTHEAST corner, Section 33, Township 117 North, Range 27 West

Certificate of Location of Government Corner

SKETCH OF REFERENCE TIES
(NO SCALE)



Statement of evidence relative to this corner location on sheet 2

I hereby certify that this document was prepared by me or under my direct supervision.

Willard Pellinen
Willard Pellinen
McLeod County Surveyor
License No. 9626

Date Nov. 21, 1992

OFFICE OF THE COUNTY RECORDER
MCLEOD COUNTY, MINNESOTA.

I hereby certify that this document was filed in this office at 9 o'clock A.M. on the 24th day of November, 1992.

Carmen O'Brien Gilder County Recorder

By _____, Deputy

Document No. 249062

SOUTHEAST corner, Section 33, Township 117 North, Range 27 West

Certificate of Location of Government Corner

1855. John Ryan of the General Land Office established this corner. He set a post and marked an 10 inch ironwood and a 12 inch elm for bearing trees.

November, 1897. E.L.Higgins, county surveyor, found a stone at the corner.

NOvember 22, 1968. McCombs Knutson Associates (Dickman Knutson, county surveyor) measured the north line of Sections 33 and 34 and set a temporary southeast corner of Section 33 at the intersection of roads east-west-north.

1970. Knutson dug at the temporary corner and found a stone down in the original ground, below the road bed. They took available reference ties. Mr. Ortwin Seamann, road boss when the road was rebuilt, said they found stones at most of the government corners along this road. Knutson set a McLeod County cast iron monument at the corner.

The monument set by Knutson is accepted as marking the section corner. It fits occupation lines (the center line intersection of the roads) and it perpetuates the location of an older monument, the stone.

November 19, 1992. We found no old reference ties remaining. We found the monument in good condition down 6 inches below the gravel surface and set new available reference ties.

EAST QUARTER corner, Section 34, Township 117 North, Range 27 West

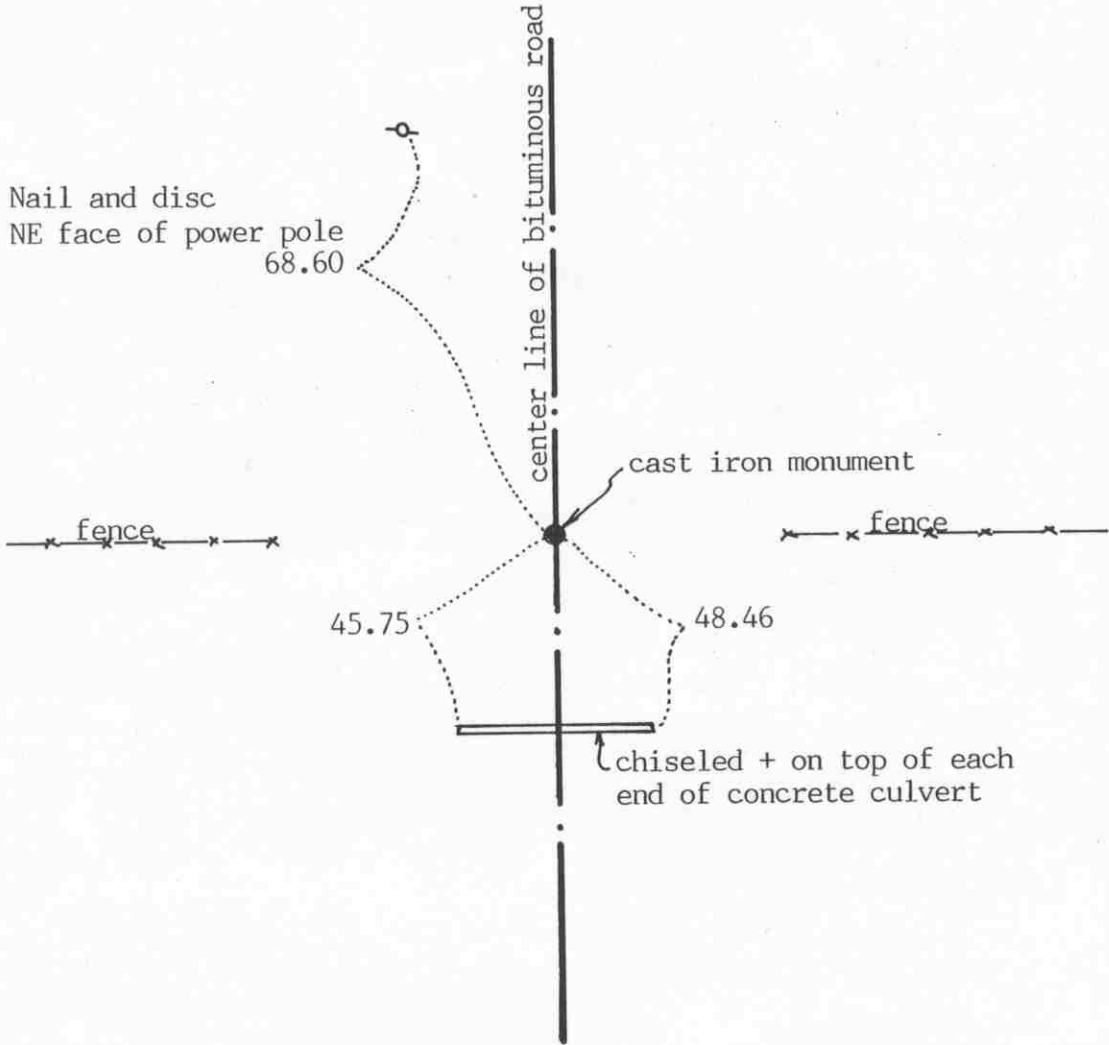
Certificate of Location of Government Corner

SKETCH OF REFERENCE TIES (NO SCALE)



SECTION 34

SECTION 35



Statement of evidence relative to this corner location on sheet 2

I hereby certify that this document was prepared by me or under my direct supervision.

Willard Pellinen

Willard Pellinen
McLeod County Surveyor
License No. 9626

Date Nov. 19, 1992

OFFICE OF THE COUNTY RECORDER
MCLEOD COUNTY, MINNESOTA.

I hereby certify that this document was filed in this office at 9 o'clock A. M. on the 24th day of November, 19 92.

Carmen H. Linder, County Recorder

By _____, Deputy

Document No. 249064

EAST QUARTER corner, Section 34, Township 117 North, Range 27 West

Certificate of Location of Government Corner

1856. E.N.Darling of the General Land Office originally established this corner. He set a post and marked a 16 inch and a 14 inch linden tree for bearing trees.

April 8, 1975. McCombs Knutson Associates (Dickman Knutson, county surveyor) found an iron pin which had been set by the Minnesota Highway Department. Knutson measured to the northeast corner of Section 34 within 0.1 foot of 1950 distance by the highway department. Knutson's measured distance to the southeast corner of Section 34 is within 1.3 feet of 1900 distance by E.L.Higgins, county surveyor. This iron pin was within 0.3 of a foot of being on a split between the section corners.

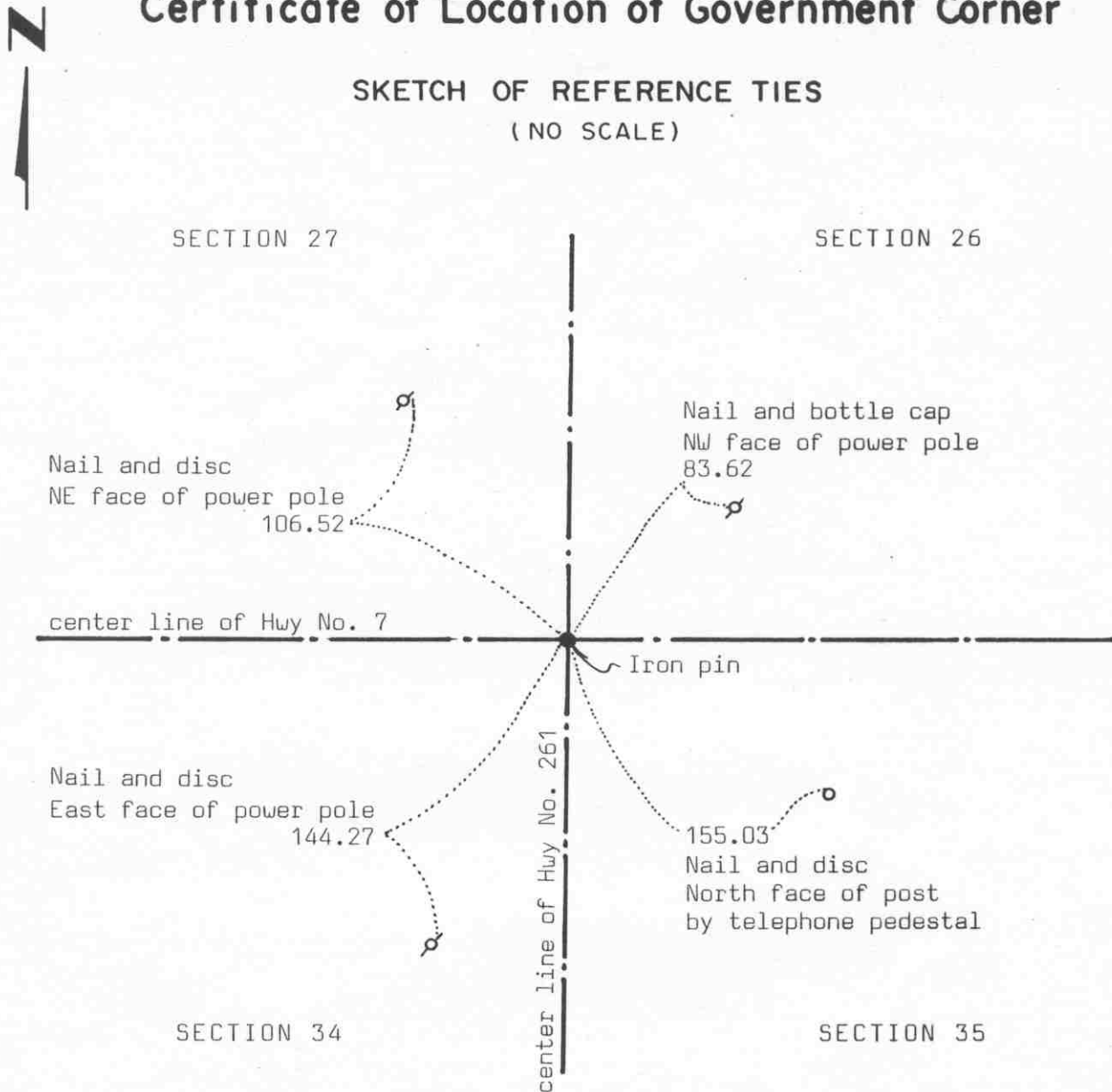
June 14, 1975. Knutson replaced the iron pin with a McLeod County cast iron monument and took available reference ties.

November 19, 1992. We found the monument in good condition and checked the reference ties.

The monument set by Knutson is accepted as the location of the quarter corner. It fits long standing occupation lines, the center line of the road and the fences east and west, and it perpetuates the location of an older monument.

Certificate of Location of Government Corner

SKETCH OF REFERENCE TIES (NO SCALE)



Statement of evidence relative to this corner location on sheet 2

I hereby certify that this document was prepared by me or under my direct supervision.

Willard Pellinen
 Willard Pellinen
 McLeod County Surveyor
 License No. 9626
 Date Jan. 5, 1991

OFFICE OF THE COUNTY RECORDER
 MCLEOD COUNTY, MINNESOTA.

I hereby certify that this document was filed in this office at 3 o'clock P. M. on the 15th day of Jan, 1991.

Carmen Ostlie, County Recorder
 By _____, Deputy

Document No. 237110

Certificate of Location of Government Corner

1856. E.N.Darling, surveyor for the General Land Office set a post for the corner and marked 3 linden and 1 elm for bearing trees.

State Highway No. 7 right of way plans show this corner to be on the center line intersection of State Highway No. 7 with State Highway No. 261 at P.I. station 842+55.3 of State Highway No. 7.

December 14, 1978. We found an iron pin 5 inches below the bituminous surface at P.I. Station 842+55.3 and we took available reference ties. These ties checked ok with ties received from the Highway Department.

July 20, 1989. We found the iron pin down 6 inches below the surface and took new reference ties.

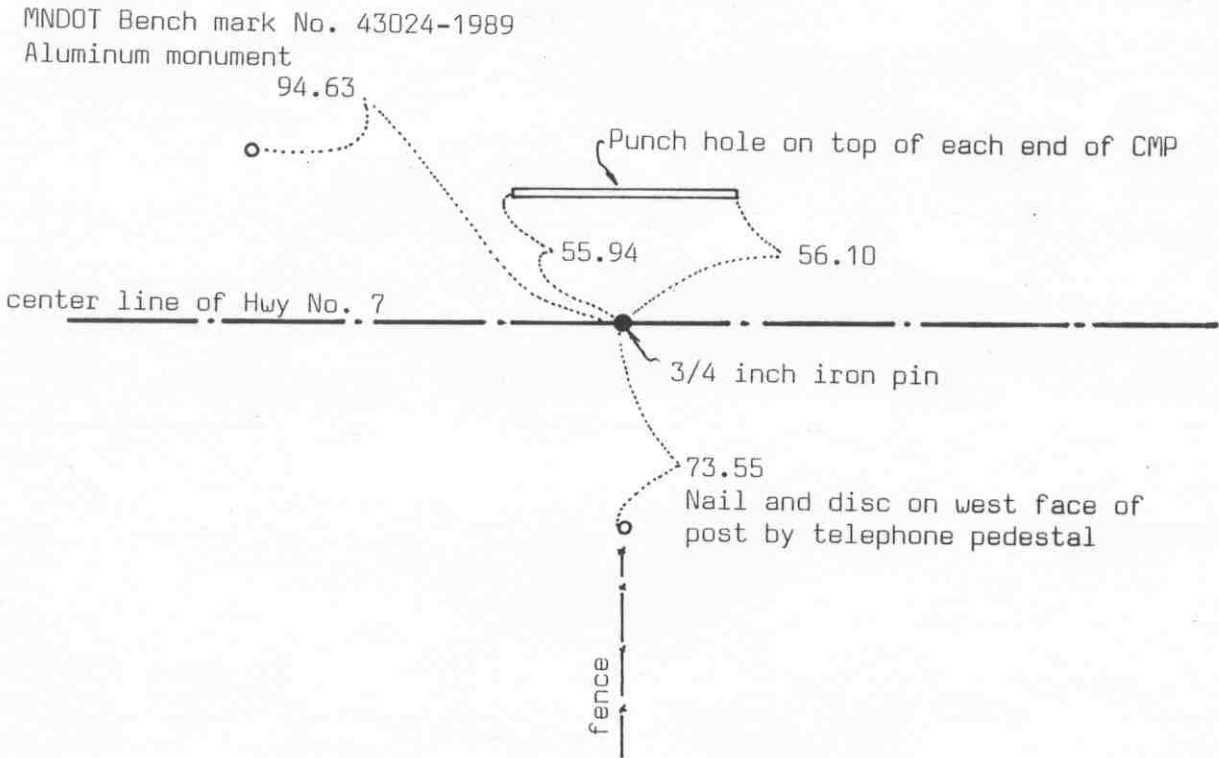
NORTH QUARTER corner, Section 34, Township 117 North, Range 27 West

Certificate of Location of Government Corner

SKETCH OF REFERENCE TIES (NO SCALE)



SECTION 27



SECTION 34

Statement of evidence relative to this corner location on sheet 2

I hereby certify that this document was prepared by me or under my direct supervision.

Willard Pellinen

Willard Pellinen
McLeod County Surveyor
License No. 9626

Date Jan 4, 1991

OFFICE OF THE COUNTY RECORDER
MCLEOD COUNTY, MINNESOTA.

I hereby certify that this document was filed in this office at 3 o'clock P.M. on the 15th day of Jan, 1991.

Carmen Ostlie, County Recorder

By _____, Deputy

Document No. 237111

Certificate of Location of Government Corner

The government notes show this corner was established in 1856 by E.N.Darling. He set a post and marked 2 linden trees for bearing trees.

State Highway No. 7 right of way plans show this corner to be on center line P.I. station 815+93.2, fences north and south.

December 14, 1978. We found a 3/4 inch diameter iron pin down 6 inches below the bituminous surface. Ties checked ok to ties received from the highway department.

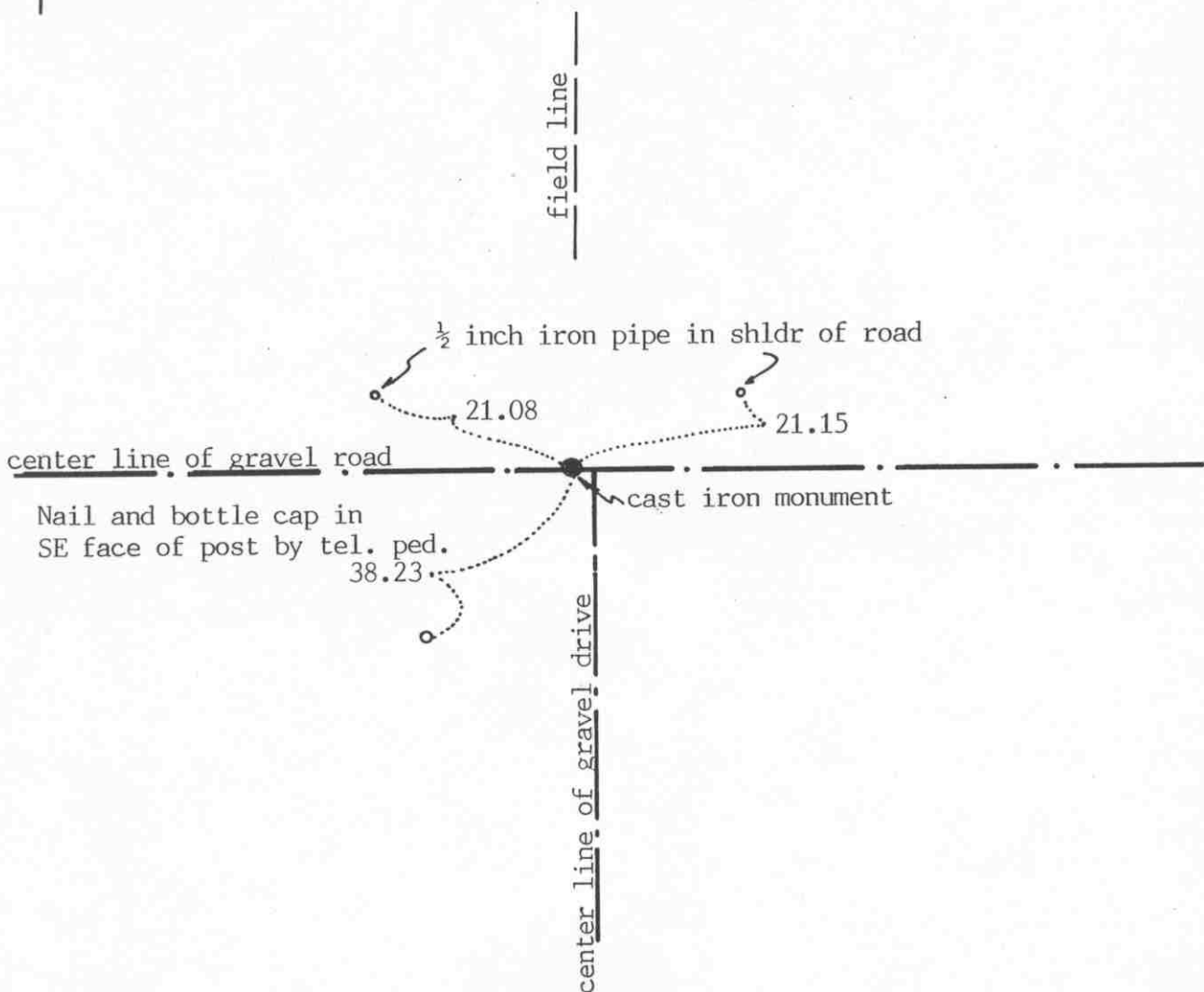
July 20, 1989. We found the iron pin down 6 inches below the surface and we took new reference ties.

SOUTH QUARTER corner, Section 34, Township 117 North, Range 27 West

Certificate of Location of Government Corner

SKETCH OF REFERENCE TIES

(NO SCALE)



Statement of evidence relative to this corner location on sheet 2

I hereby certify that this document was prepared by me or under my direct supervision.

Willard Pellinen
Willard Pellinen
McLeod County Surveyor
License No. 9626

Date Nov. 21, 1992

OFFICE OF THE COUNTY RECORDER
MCLEOD COUNTY, MINNESOTA.

I hereby certify that this document was filed in this office at 9 o'clock A. M. on the 24th day of November, 19 92.

Carmen Holter-Julder, County Recorder

By _____, Deputy

Document No. 249066

SOUTH QUARTER corner, Section 34, Township 117 North, Range 27 West

Certificate of Location of Government Corner

1855. This corner was originally established by John Ryan of the General Land Office. He set a post and marked a 9 inch elm and a 7 inch linden for bearing trees.

1968. McCombs Knutson Associates (Dickman Knutson, county surveyor) set a temporary corner on the center line of the east west road in line with a fence to the north.

1970. Knutson dug for the corner, John Tupa from Hutchinson with a backhoe. Down below the road bed, in the original ground, they found a stone and a wood stake. They took available reference ties and set a McLeod County cast iron monument.

This corner is within a few tenths of a foot of being on a split between the section corners and within 3 feet of being on a straight line between the section corners.

The monument set by Knutson is accepted as marking the quarter corner. It fits occupation lines, the center line of the road and the fence, and it perpetuates the location of an older monument, the stone.

November 19, 1992. We found no old reference ties remaining. We found the monument in good condition down 6 inches below the surface of the gravel road and we set new available reference ties.

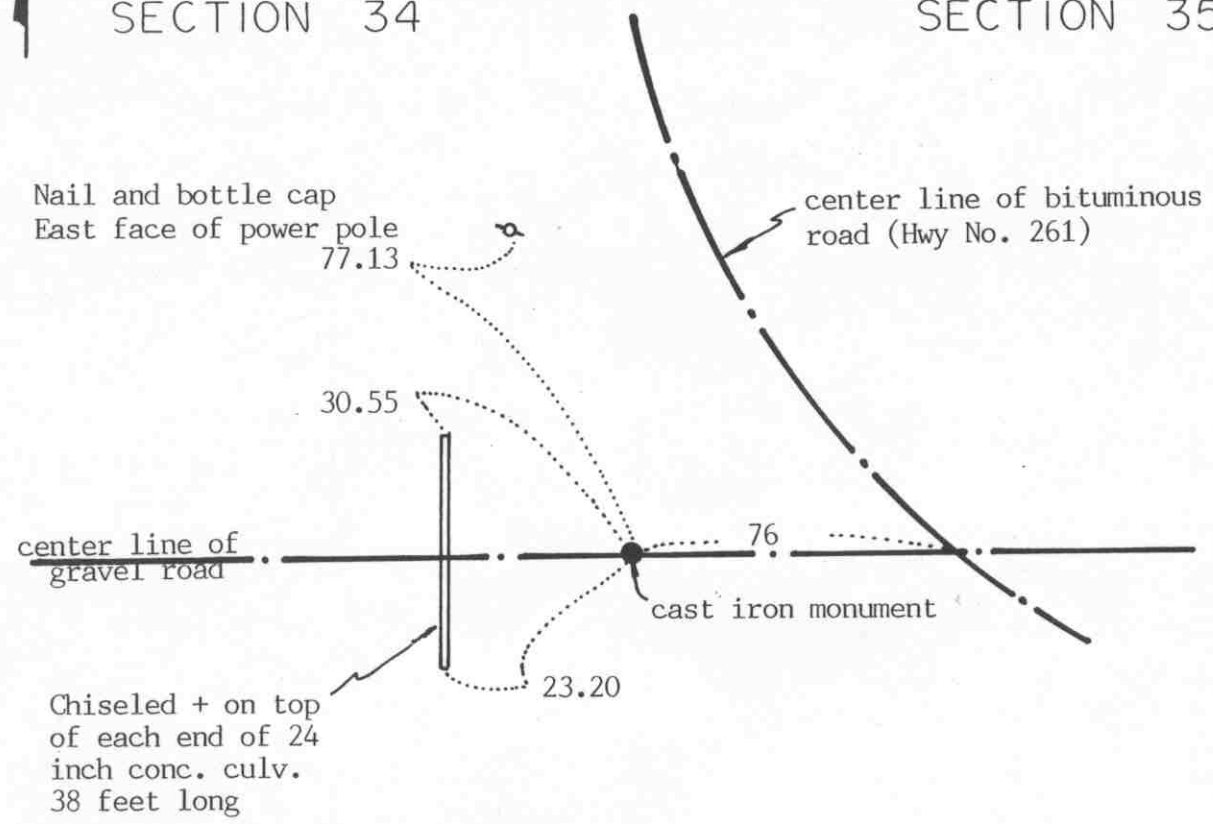
SOUTHEAST corner, Section 34, Township 117 North, Range 27 West

Certificate of Location of Government Corner

SKETCH OF REFERENCE TIES
(NO SCALE)

SECTION 34

SECTION 35



Statement of evidence relative to this corner location on sheet 2

I hereby certify that this document was prepared by me or under my direct supervision.

Willard Pellinen
Willard Pellinen
McLeod County Surveyor
License No. 9626

Date Nov. 21, 1992

OFFICE OF THE COUNTY RECORDER
MCLEOD COUNTY, MINNESOTA.

I hereby certify that this document was filed in this office at 9 o'clock A.M. on the 24th day of November, 19 92.

Carmen St. Louis Mulder, County Recorder

By _____, Deputy

Document No. 249065

SOUTHEAST _____ corner, Section 34, Township 117 North, Range 27 West

Certificate of Location of Government Corner

August 13, 1855. John Ryan of the General Land Office established this corner. He set a post and marked a 6 inch ironwood and a 14 inch elm for bearing trees.

November 22, 1968. McCombs Knutson Associates (Dickman Knutson, county surveyor) set a temporary section corner on the center line of the east-west road on the southerly extension of the center line of the road to the north.

1970. Knutson dug at the temporary corner, John Tupa from Hutchinson with a backhoe. Down at the original ground, below the old road bed, they found a stone and a wood stake. They took available reference ties. Knutson set a McLeod County cast iron monument at the corner. They found a 3/4 inch diameter iron pine 32.65 feet north of the monument. State Highway No. 261 right of way map shows the center line P.I. Station 652+23.3 to be approximately 33 feet north of the section corner.

The monument set by Knutson is accepted as marking the section corner. It fits occupation lines (the center lines of the roads) and it perpetuates the location of an older monument, the stone and stake.

November 19, 1992. We found the monument in good condition down 10 inches below the gravel surface and set new reference ties.

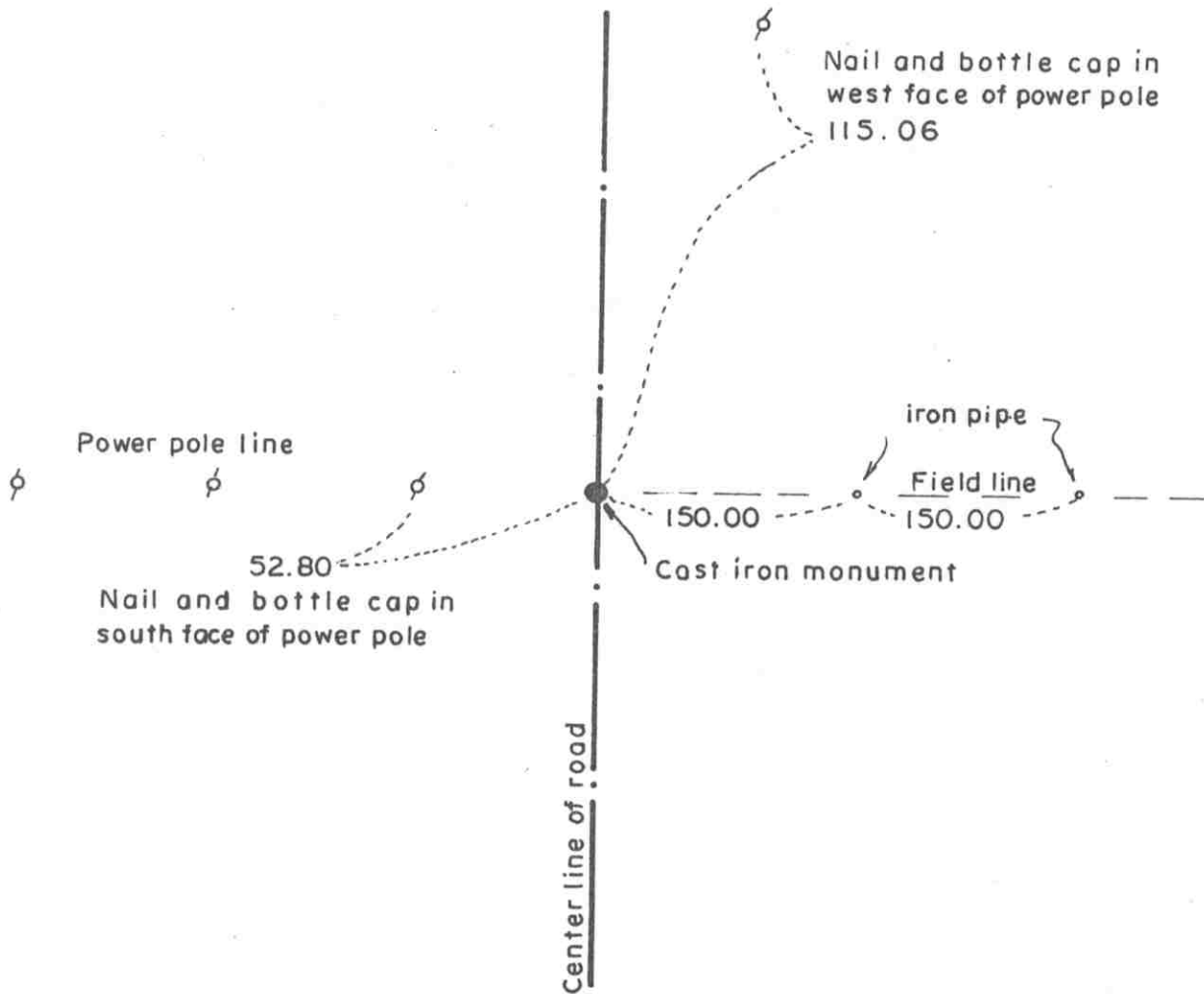
EAST QUARTER corner, Section 35, Township 117 North, Range 27 West

Certificate of Location of Government Corner

SKETCH OF REFERENCE TIES
(NO SCALE)

SECTION 35

SECTION 36



Statement of evidence relative to this corner location on sheet 2

I hereby certify that this document was prepared by me or under my direct supervision.

Willard Pellinen

Willard Pellinen
McLeod County Surveyor
License No. 9626

Date May 24, 1990

OFFICE OF THE COUNTY RECORDER
MCLEOD COUNTY, MINNESOTA.

I hereby certify that this document was filed in this office at 9 o'clock A. M. on the 23rd day of January, 19 96.

Carmen Ostlie Mulder, County Recorder

By _____, Deputy

Document No. 270532

EAST QUARTER corner, Section 35, Township 117 North, Range 27 West

Certificate of Location of Government Corner

1856. This corner was originally established by E.N. Darling of the General Land Office. He set a post and marked a 12 inch and a 10 inch oak for bearing trees.

June 24, 1977. McCombs Knutson Associates dug for the corner at the center line of the north - south road in line with a power pole line to the west. Knutson found a $\frac{1}{2}$ inch diameter iron pipe and took available reference ties.

February 25, 1980. Mr. Elmer Klaustermeier, 72 years old and had lived in the Southeast Quarter of Section 35 for 24 years, said the power pole line is on the east-west quarter line of Section 35. Mr. Benedict Otto, 63 years old and had lived in the Northeast Quarter of Section 35 for 28 years, agrees with Mr. Klaustermeier.

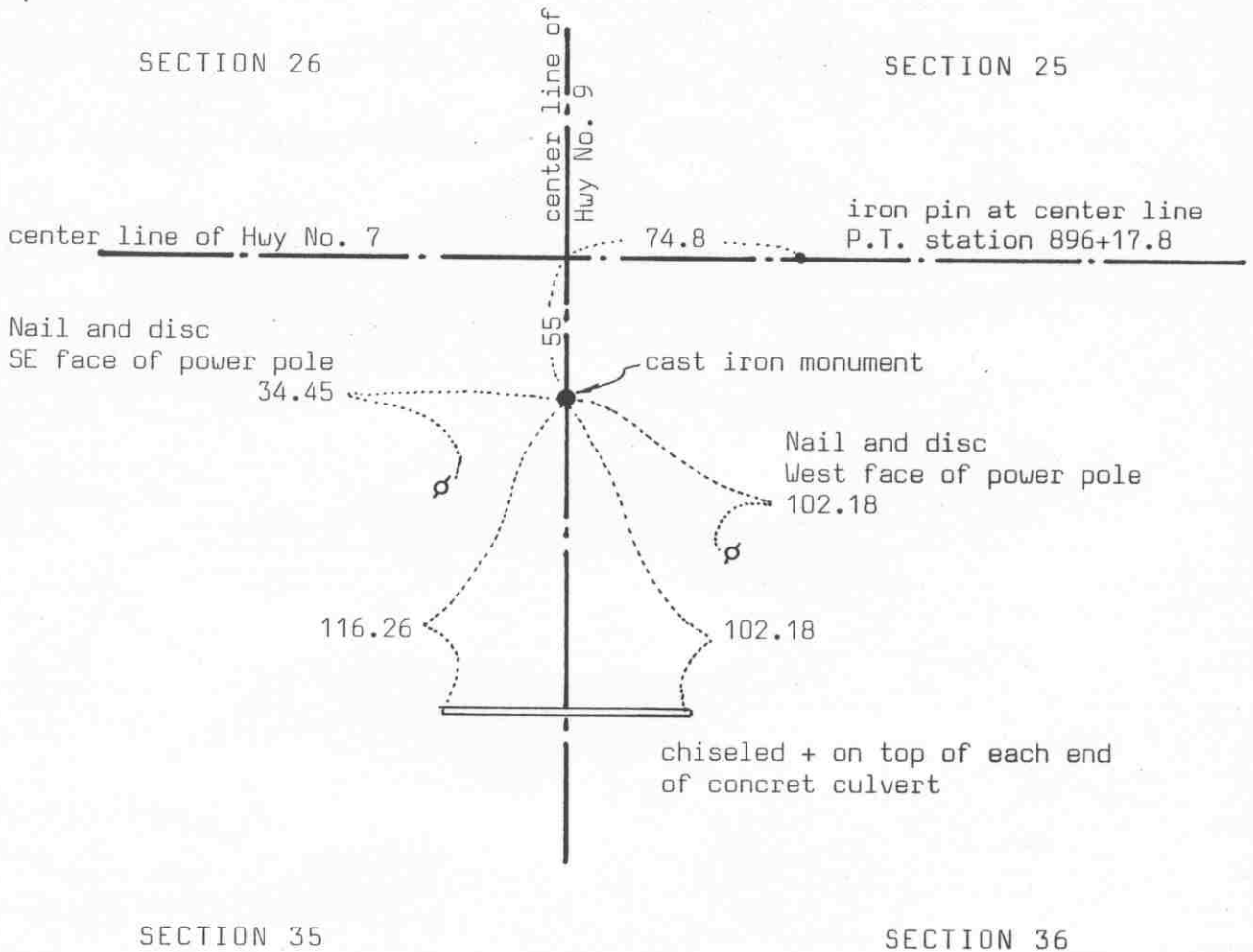
July 17, 1980. We set a McLeod County cast iron monument at the corner.

May 23, 1990. We took new ties for the corner. The old ties will be destroyed by road construction. We measured the east line of Section 35. The monument is 2.61 feet south of a split between the section corners and 8.04 feet east of a straight line between the section corners.

NORTHEAST corner, Section 35, Township 117 North, Range 27 West

Certificate of Location of Government Corner

SKETCH OF REFERENCE TIES (NO SCALE)



Statement of evidence relative to this corner location on sheet 2

I hereby certify that this document was prepared by me or under my direct supervision.

Willard Pellinen
Willard Pellinen
McLeod County Surveyor
License No. 9626

Date Jan 3, 1991

OFFICE OF THE COUNTY RECORDER
MCLEOD COUNTY, MINNESOTA.

I hereby certify that this document was filed in this office at 3 o'clock P. M. on the 15th day of Jan, 1991.

Carmen Helie, County Recorder

By _____, Deputy

Document No. 237112

Certificate of Location of Government Corner

The government notes show this corner was originally set by E.N. Darling in 1856. He set a post and marked 3 elms and 1 ash for bearing trees.

April 7, 1900. E.L. Higgins, county surveyor, measured 2640 feet from this corner to the north quarter corner of Section 35. His notes don't show what was found at the corner.

State Highway No. 7 right of way map shows this corner to be south of the center line of the highway.

July 17, 1967. McCombs Knutson Associates (Dickman Knutson, county surveyor) found an iron pin 55 feet south of the as built center line of No. 7 on the center line of County Highway No. 9. This was very nearly on a spit between the east quarter corner of Section 26 and the east quarter corner of Section 35. They took reference ties.

April 17, 1973. Knutson again used this corner and took new reference ties. The field notes show there was a fence (running east 1/4 mile north) which was $\frac{1}{2}$ way between this corner and the east quarter corner of Section 26.

July 30, 1974. Knutson replaced the iron pin with a McLeod County cast iron monument.

July 20, 1989. We found the cast iron monument in good condition and the reference ties good.

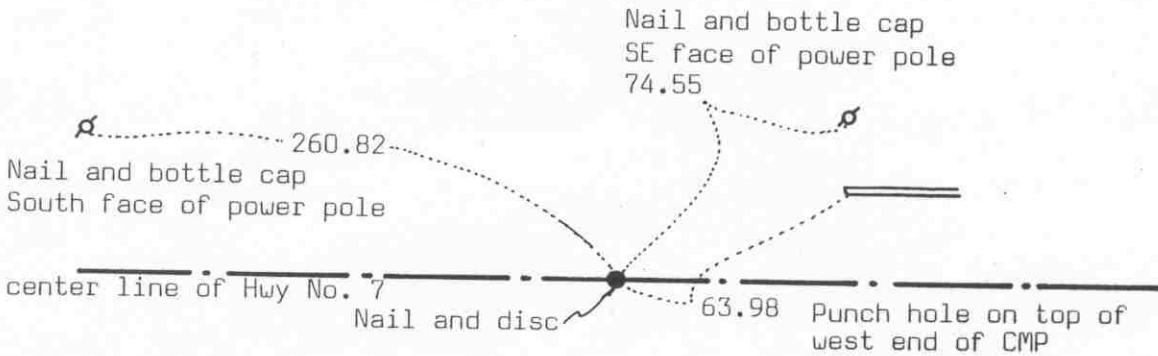
NORTH QUARTER corner, Section 35, Township 117 North, Range 27 West



Certificate of Location of Government Corner

SKETCH OF REFERENCE TIES (NO SCALE)

SECTION 26



SECTION 35

Statement of evidence relative to this corner location on sheet 2

I hereby certify that this document was prepared by me or under my direct supervision.

Willard Pellinen
Willard Pellinen
McLeod County Surveyor
License No. 9626

Date Jan. 3, 1991

OFFICE OF THE COUNTY RECORDER
MCLEOD COUNTY, MINNESOTA.

I hereby certify that this document was filed in this office at 3 o'clock P. M. on the 15th day of Jan, 1991.

Carmen Ostlie, County Recorder

By _____, Deputy

Document No. 237113

NORTH QUARTER corner, Section 35, Township 117 North, Range 27 West

Certificate of Location of Government Corner

This corner was originally set by the government in 1856. E.N.Darling set a post and marked 1 elm and 1 linden for bearing trees.

April 7, 1900. Field notes by E.L.Higgins, county surveyor, show a distance of 2640 feet from this corner to the northeast corner of Section 35. Notes don't show what was found or set at the corners.

State Highway right of way map shows this corner to be on the center line of the highway at station 869+00.

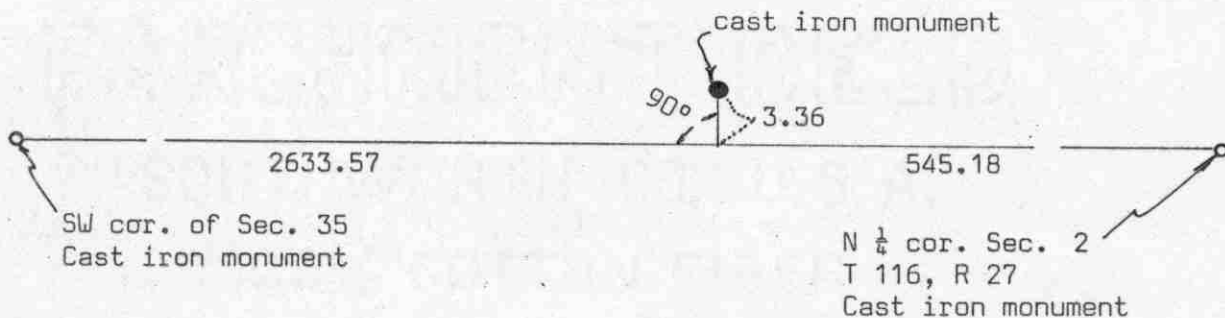
1974. McCombs Knutson Associates (Dickman Knutson, county surveyor) set a nail and disc at the center line station 869+00. They had a distance of 2640.46 feet to the northeast corner of Section 35

July 20, 1989. We found the nail and disc and checked the reference ties.

Certificate of Location of Government Corner



SKETCH OF REFERENCE TIES
(NO SCALE)



Statement of evidence relative to this corner location on sheet 2

I hereby certify that this document was prepared by me or under my direct supervision.

Willard Pellinen

Willard Pellinen
McLeod County Surveyor
License No. 9626

Date 3/30/89

OFFICE OF THE COUNTY RECORDER
MCLEOD COUNTY, MINNESOTA.

I hereby certify that this document was filed in this office at 3 o'clock P.M. on the 6th day of April, 19 89.

Carmen Ostlie, County Recorder

By _____, Deputy

Document No. 227614

Certificate of Location of Government Corner

This corner was set in 1856 by E.N.Darling of the Government Land Office. He set a post and had reference ties to 2 bearing trees.

1900. E.L.Higgins' notes show this corner half way between the section corners.

In November, 1968, McCombs Knutson Associates, Dickman Knutson County Surveyor, found 2 inch diameter iron pipe $2\frac{1}{2}$ feet east of fence intersection, fences south and east. This was within a foot or so of being half way between the section corners.

1971. We set a McLeod County cast iron monument in place of the iron pipe and took reference ties.

November 9, 1988. The monument had been plowed out and fences removed and all reference ties destroyed. We reset the corner using distances from McCombs Knutson surveys to the southwest corner of Section 35 and the north quarter corner of Section 2, T 116, R 27.

We believe the iron pipe found in 1968 was the same quarter corner as shown in notes by E.L.Higgins.

SOUTHEAST corner, Section 35, Township 117 North, Range 27 West

Certificate of Location of Government Corner

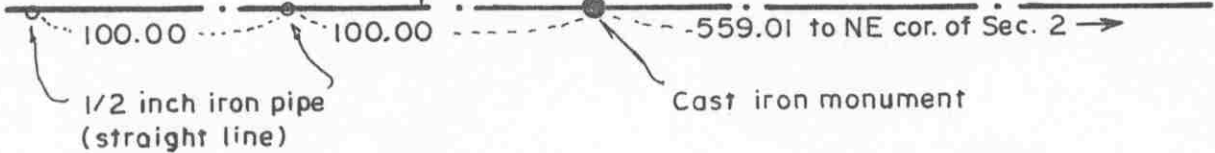
SKETCH OF REFERENCE TIES (NO SCALE)



Nail and bottle cap in west face of guy pole.

85.80

(To E 1/4 cor. Sec. 35) 89° 48' 25"



Statement of evidence relative to this corner location on sheet 2

I hereby certify that this document was prepared by me or under my direct supervision.

Willard Pellinen
Willard Pellinen
McLeod County Surveyor
License No. 9626

Date May 24, 1990

OFFICE OF THE COUNTY RECORDER
MCLEOD COUNTY, MINNESOTA.

I hereby certify that this document was filed in this office at 9 o'clock A.M. on the 23rd day of January, 1996.

Carmen Ottilie Mulder, County Recorder

By _____, Deputy

Document No. 270533

SOUTHEAST corner, Section 35, Township 117 North, Range 27 West

Certificate of Location of Government Corner

1855. John Ryan of the General Land Office originally set this corner. He set a post and marked a 12 inch and a 6 inch elm for bearing trees.

April 7, 1900. E.L.Higgins, county surveyor, shows a distance of 2630.2 feet to the south quarter corner of Section 35 and a distance of 567.7 feet to the northeast corner of Section 2.

November 23, 1968. McCombs Knutson Associates (Dickman Knutson, county surveyor) found an iron pin at the corner. They took available reference ties and in 1970 replaced the iron pin with a McLeod County cast iron monument.

May 23, 1990. We found the monument in good condition and took additional reference ties. All the old ties to be destroyed by road construction. We measured 2634.27 feet to the south quarter corner of Section 35 and 559.01 feet to the northeast corner of Section 2.

The monument set by Knutson is accepted as marking the section corner. It fits occupation lines, the center line of the east-west road and the southerly extension of the road from the north, and it perpetuates the position of an older monument.

EAST QUARTER corner, Section 36, Township 117 North, Range 27 West

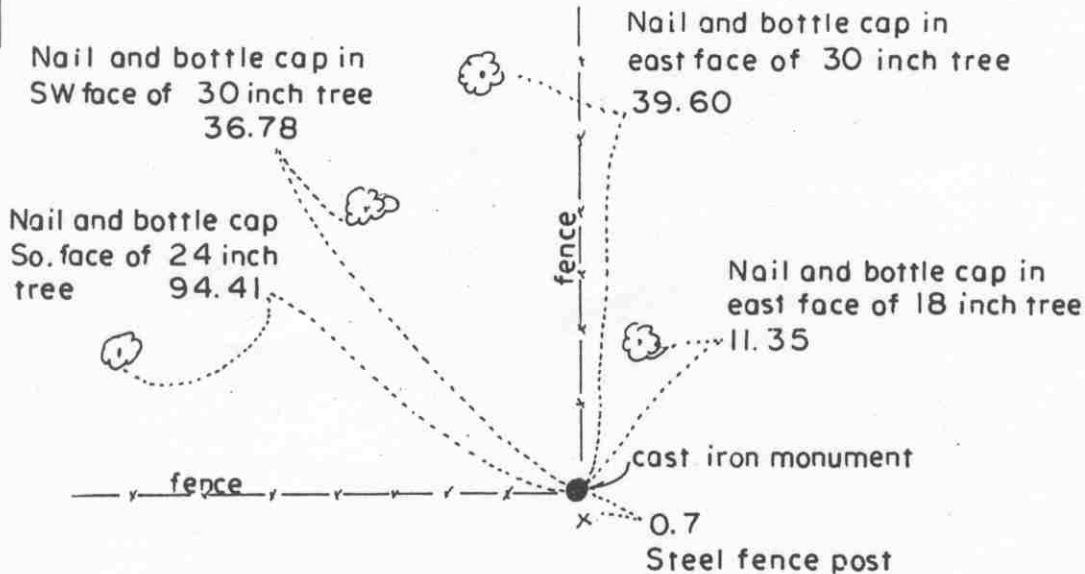
Certificate of Location of Government Corner

SKETCH OF REFERENCE TIES

(NO SCALE)

SECTION 36, T. 117, R. 27

SECTION 31, T. 117, R. 26



Statement of evidence relative to this corner location on sheet 2

I hereby certify that this document was prepared by me or under my direct supervision.

Willard Pellinen
 Willard Pellinen
 McLeod County Surveyor
 License No. 9626

Date Feb. 1, 1995

OFFICE OF THE COUNTY RECORDER
 MCLEOD COUNTY, MINNESOTA.

I hereby certify that this document was filed in this office at 9 o'clock A.M. on the 6th day of February, 1995.

Carmen Ottilie Mulder, County Recorder
 By _____, Deputy

Document No. 264044

EAST QUARTER corner, Section 36, Township 117 North, Range 27 West

Certificate of Location of Government Corner

1855. John Ryan of the General Land Office established this corner. He set a post and marked two 10 inch elms for bearing trees.

April 21, 1972. Mr. Sterner, who lived in the Southwest Quarter of Section 31, Township 117, Range 26, testified that there is a flat iron bar at the corner. (at the fence intersection) Other adjoining land owners agree the fence intersection is the corner.

October 22, 1971. McCombs Knutson Associates (Dickman Knutson, county surveyor) found a flat iron bar at the fence intersection. (Fences north and west)

October 29, 1971. Knutson replaced the iron bar with a McLeod County cast iron monument and took available reference ties.

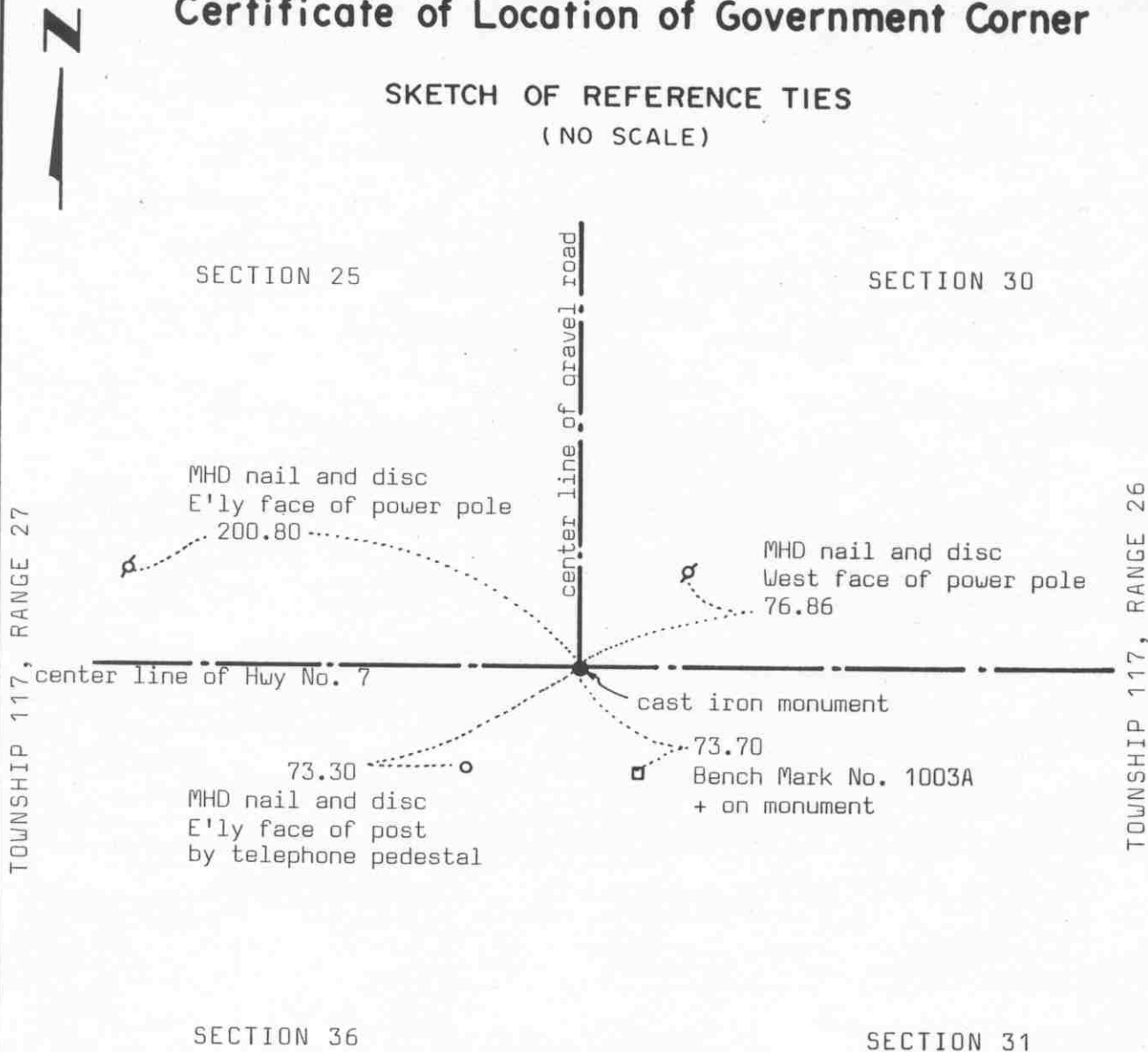
May, 1990. We found the monument in good condition.

The monument set by Knutson is accepted as marking the location of the quarter corner. It fits occupation lines, the fence intersection, and it perpetuates the location of an older monument, the iron bar.

NORTHEAST corner, Section 36, Township 117 North, Range 27 West

Certificate of Location of Government Corner

SKETCH OF REFERENCE TIES (NO SCALE)



Statement of evidence relative to this corner location on sheet 2

I hereby certify that this document was prepared by me or under my direct supervision.

Willard Pellinen
Willard Pellinen
McLeod County Surveyor
License No. 9626

Date Jan. 3, 1991

OFFICE OF THE COUNTY RECORDER MCLEOD COUNTY, MINNESOTA.

I hereby certify that this document was filed in this office at 3 o'clock P. M. on the 15th day of Jan, 1991.

Carmen Ostlie, County Recorder
By _____, Deputy

Document No. 237114

NORTHEAST

corner, Section 36, Township 117 North, Range 27 West

Certificate of Location of Government Corner

The government notes show this corner was originally established in 1855 by John Ryan. He set a post and marked 3 elms for bearing trees.

1923. Louis Zeman, Carver County Surveyor, found a granite monument at the corner.

1934. Minnesota Highway Department found a broken square stone and they set an iron over it. They used it as the center line P.I. station 948+41.3.

1968. The Highway Department found the iron they had set down 1.7 feet below the surface. They reset it flush with the surface of the bituminous surface.

October, 1971. McCombs Knutson Associates (Dickman Knutson, County Surveyor) found the iron pin and took reference ties.

July 20, 1989. We found a cast iron monument which had been set by the Carver County Surveyor in place of the iron pin. The reference ties checked ok.

We accept the monument as marking the the correct location of the section corner. The highway department had perpetuated the correct location with their iron pin.

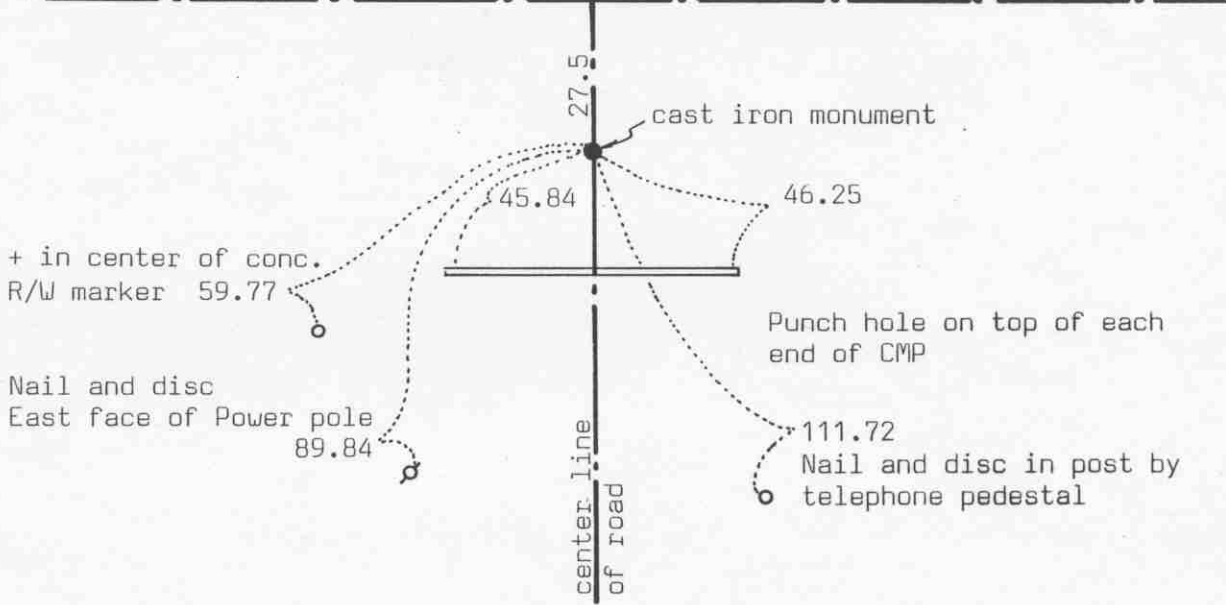
NORTH QUARTER corner, Section 36, Township 117 North, Range 27 West

Certificate of Location of Government Corner

SKETCH OF REFERENCE TIES (NO SCALE)

SECTION 25

center line of Hwy No. 7



SECTION 36

Statement of evidence relative to this corner location on sheet 2

I hereby certify that this document was prepared by me or under my direct supervision.

Willard Pellinen
Willard Pellinen
McLeod County Surveyor
License No. 9626

Date Jan 4, 1991

OFFICE OF THE COUNTY RECORDER MCLEOD COUNTY, MINNESOTA.

I hereby certify that this document was filed in this office at 3 o'clock P. M. on the 15th day of Jan, 1991.

Carmen Ostlie, County Recorder

By _____, Deputy

Document No. 237115

Certificate of Location of Government Corner

The government notes show this corner was originally set by E.N.Darling in 1856. He set a post and marked 2 lindens for bearing trees.

State Highway No. 7 right of way map shows this corner to be south of the center line of the highway. They used the center line intersection of the old east west road with the center line of the north-south road as the corner.

July 17, 1967. McCombs Knutson Associates (Dickman Knutson, county surveyor) found an iron pin on the center line of the north-south road, 27.5 feet south of the as built center line of Highway No. 7. They took reference ties.

January 22, 1979. The iron pin was gone. Knutson set a railroad spike using the 1967 ties.

July 18, 1980. We replaced the rail road spike with a McLeod County cast iron monument and took new reference ties.

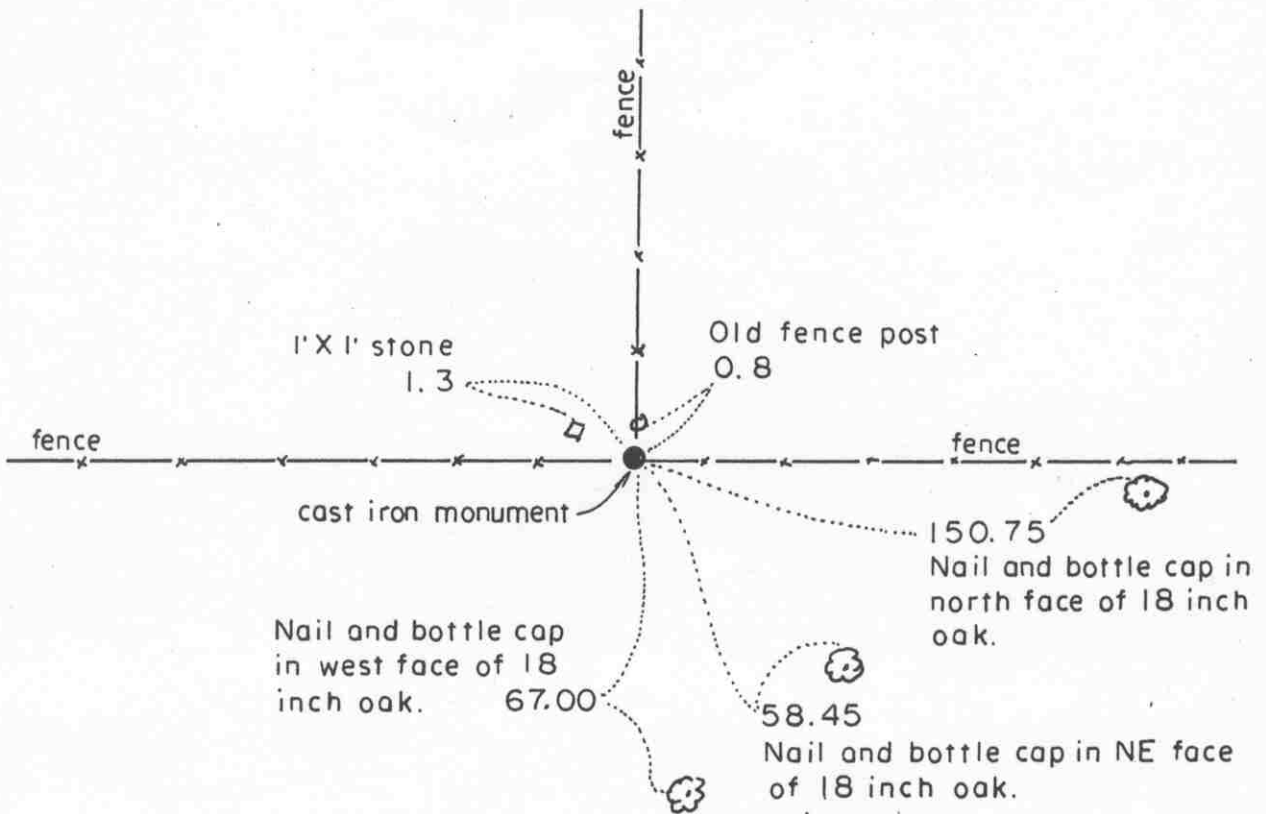
July 20, 1989. We found the monument in good condition and the reference ties good.

SOUTH QUARTER corner, Section 36, Township 117 North, Range 27 West

Certificate of Location of Government Corner

SKETCH OF REFERENCE TIES
(NO SCALE)

SECTION 36



Statement of evidence relative to this corner location on sheet 2

I hereby certify that this document was prepared by me or under my direct supervision.

Willard Pellinen
Willard Pellinen
McLeod County Surveyor
License No. 9626

Date Feb. 1, 1995

OFFICE OF THE COUNTY RECORDER
MCLEOD COUNTY, MINNESOTA.

I hereby certify that this document was filed in this office at 9 o'clock A.M. on the 6th day of February, 1995.

Carmen Ottilie Mulder County Recorder
By _____, Deputy

Document No. 264046

SOUTH QUARTER corner, Section 36, Township 117 North, Range 27 West

Certificate of Location of Government Corner

1855. John Ryan of the General Land Office set a post and marked a 14 inch and a 12 inch elm for bearing trees.

November 1968. McCombs Knutson Associates (Dickman Knutson, county surveyor) found a stone at the old fence intersection. (fences east-west-north) Mr. William Klaustermeier, who lived in the Southeast Quarter of Section 36, agreed this is the quarter corner.

Knutson replaced the stone with a McLeod County cast iron monument and took available reference ties.

January, 1995. The monument set by Knutson is accepted as marking the correct location of the government corner. It fits long standing occupation lines (the fences) and it perpetuates the location of an older monument (the stone).

Certificate of Location of Government Corner

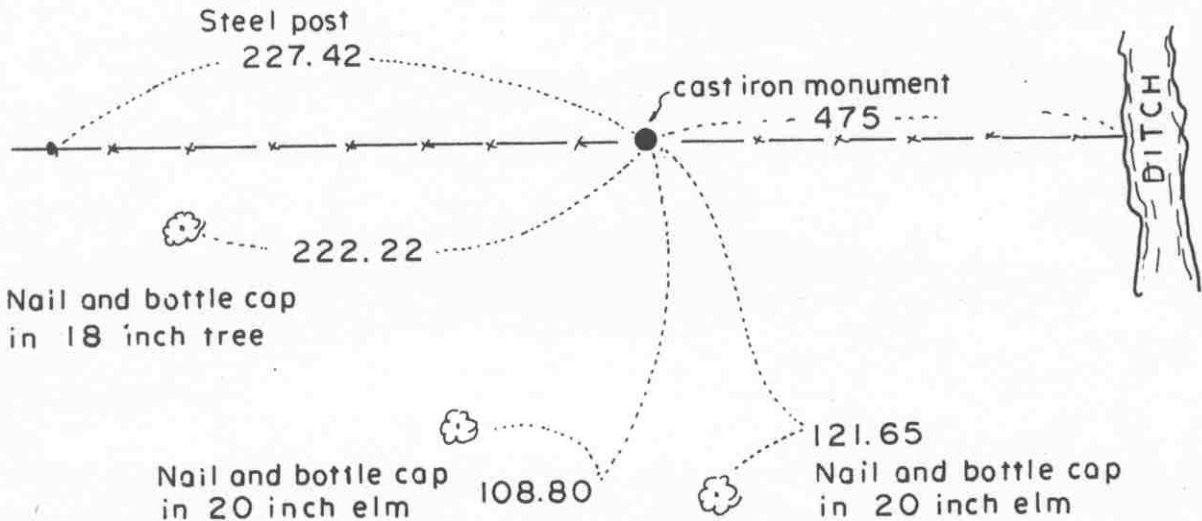
Southeast corner, Section 36, Township 117 North, Range 27 West

SKETCH OF REFERENCE TIES (NO SCALE)



SECTION 36
T. 117, R. 27

SECTION 31
T. 117, R. 26



T. 116 N., R. 27 W.

Statement of evidence relative to this corner location on sheet 2

I hereby certify that this document was prepared by me or under my direct supervision.

Willard Pellinen
Willard Pellinen
McLeod County Surveyor
License No. 9626.

Date Feb. 1, 1995

OFFICE OF THE COUNTY RECORDER
MCLEOD COUNTY, MINNESOTA

I hereby certify that this document was filed in this office at 9 o'clock A. M. on the 6th day of February, 19 95.

Carman Ottilie Mulder, County Recorder

By _____, Deputy.

Document No. 264045

Certificate of Location of Government Corner

1969. McCombs Knutson Associates (Dickman Knutson, county surveyor) found a limestone monument along the east-west fence in a swamp. The top of the monument was broken off but the stone was in fair condition under ground.

William Klaustermeier, who lived in the Northeast Quarter of Section 1, Township 116, Range 27, said his father had seen the limestone monument along the old fence, but said he had never seen it himself. Knutson replaced the limestone monument with a McLeod County cast iron monument and took available reference ties.